

IMS300 SURVEILLANCE SYSTEM

USER MANUAL

Introduction

1. Summary:

《IMS300 Surveillance System User Manual》introduces the software features and configuration operation of IMS300. Please go through this user manual before operating.

2. Symbol agreement:

The meaning of symbols hereinafter is as following:




Symbols	Statement
[]	“[]” refers interface, menu and data sheet, e.g. “[Add User] interface”
【 】	“【】” refers button, e.g. “click 【OK】”
	Introduction: make some complement explanation to the contents.
	Warning: prompt the warning in order to avoid damage caused by improper operation.
	Note: prompt operation notes in order to avoid data loss and device damage caused by improper operation.

TABLE OF CONTENTS

1 Introduction	3
1.1 System Introduction.....	3
1.2 Configuration requirement.....	3
2 Program Install	4
3 Quick Guide.....	8
3.1 The client login	8
3.2 Home Page Introduction	8
3.3 Device Management	9
3.3.1 Add Device	9
3.3.2 Delect and Modify Device	12
4 Video Surveillance.....	14
4.1 Real-time Video	14
4.1.1 Real-time preview	14
4.1.2 Local Video.....	15
4.1.3 PTZ Setting	16
5 Video Playback	19
5.1 Video Playback	19
5.2 Video cut and download	21
6 EMap	24
6.2 Edit Map	25
6.3 Add HotSpots.....	27
6.4 Edit HotSpots.....	28
7 Alarm Event.....	29
7.1 Event Center	30
7.2 Event Handling	30
8 Configuration Management	32
8.1 Basic Settings	32
8.2 File Settings	33
8.3 Plan Configuration.....	34
8.3.1 View Plan.....	34
9 User Management.....	34

1 Introduction

1.1 System Introduction

IMS300 is a professional surveillance system software which support multi-user, multi-window and multi-language , voice talk, EMap, alarm and etc. IM300 is compatible with various access devices. This is a stable, reliable and easy operation system.

IMS300 is software applications for embedded network CCTV monitoring equipment including NVR,IP Camera, IP Dome, PCNVR , decoding device and AV decoding card, it can support real-time preview, remote configuration, recording,playback, alarm, electric map and etc..

- Simple Component Design: Multiple components can be installed in one PC For a highly integrated.
- 550 end users System: Add as much as 50 end users, fully meet the various system permissions management solution.
- Find back the password with the super user permissions batch function.
- Interface container processing mode: Elaborate method of container handling, simplifies the screen and single switch, significantly improved screen operation experience.。
- Channel management mode: Add the channel management mode, adapt the IP monitoring more.
- Compatible with custom tools to generate configuration files.
- Consider more for UE : Provide visual image type control panel based on the UE, reverse the USES the required type.

Need only visible display mode:on client component interface elements,joined the need only visible display mode,the calendar,time,the toolbar,the system info,etc.,to join the design pattern.

1.2 Configuration requirement

Lowest requirement of client to run IMS300 see below table 1-1:

Table 1-1 lowest configuration

Parameter	Introduction
CPU	Intel Pentium IV 3.0 GHz or more
RAM	DDR3 1GB
HDD	Available space is more than 10 GB
Operation System	Microsoft Windows 7、 Microsoft Windows 8.1、 Microsoft Windows 10
Display Resolution	Resolution above 1024×768, suggest to use resolution of 1280×1024 Hardware support version above DirectX9.0c

2 Program Install

Below shows detailed installation procedure of IMS300:

Step one: Double click IMS_300_V1.1.2 Trial.exe to install this program;

Step two: Complete the installation following the guide, click **【Next】**, see “Figure 2-1”:

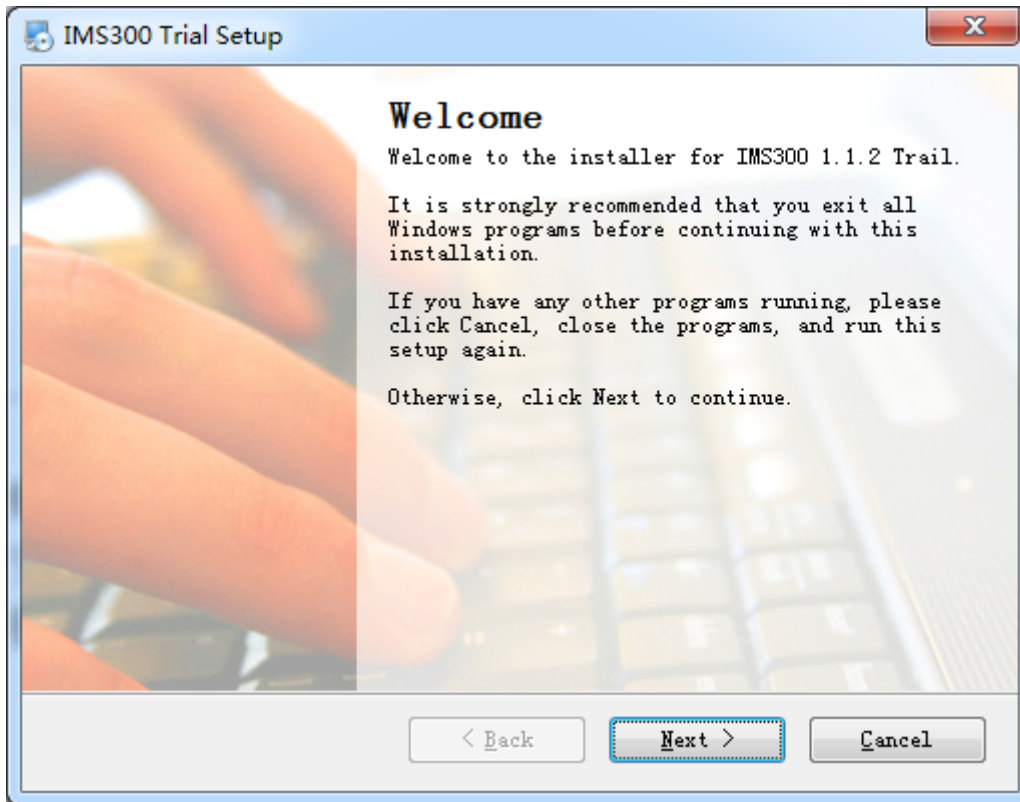


Figure 2-1

Step Three: Change [Name] and [Company], click **Next**, see Figure 2-2:

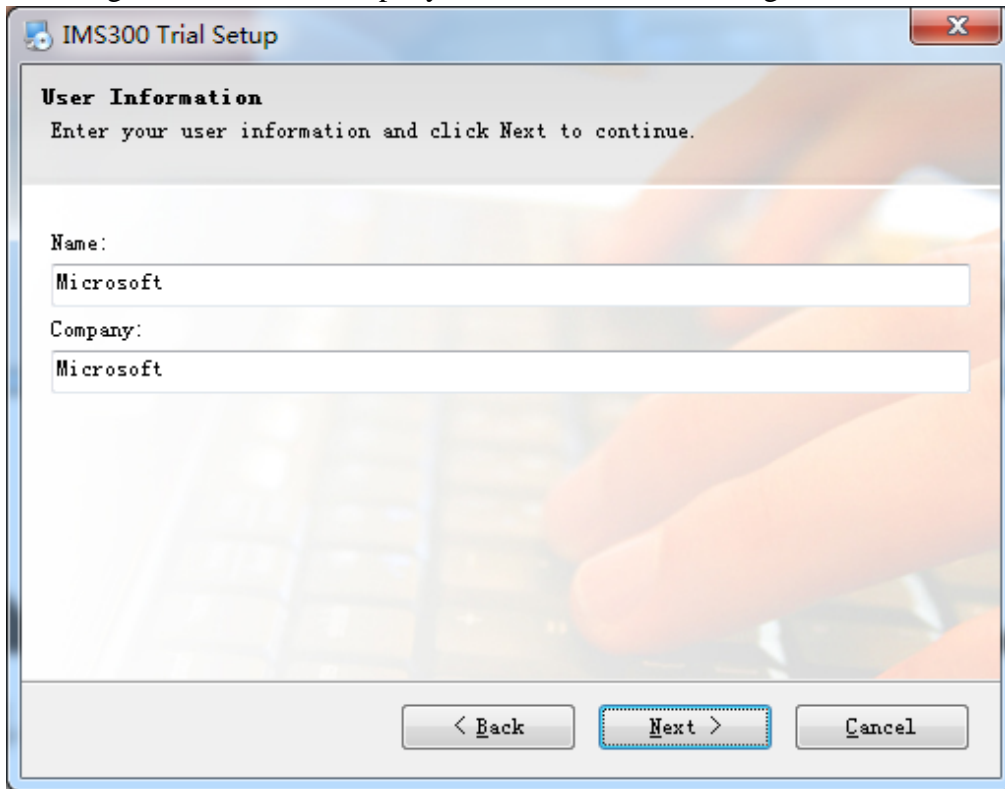


Figure 2-2

Step Four: Select installation path, the default path is: C:\Program Files (x86)\IMS300), then click **Next**, see Figure 2-3 :

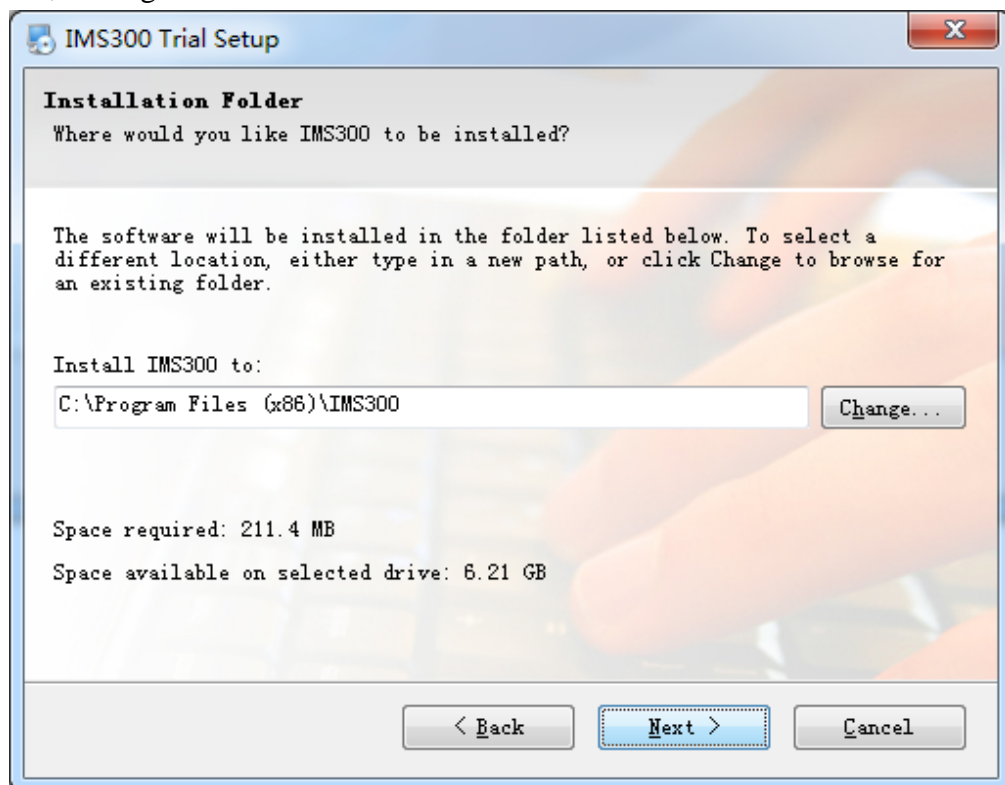


Figure 2-3

Step Five: Click **【Next】**, see Figure 2-4:

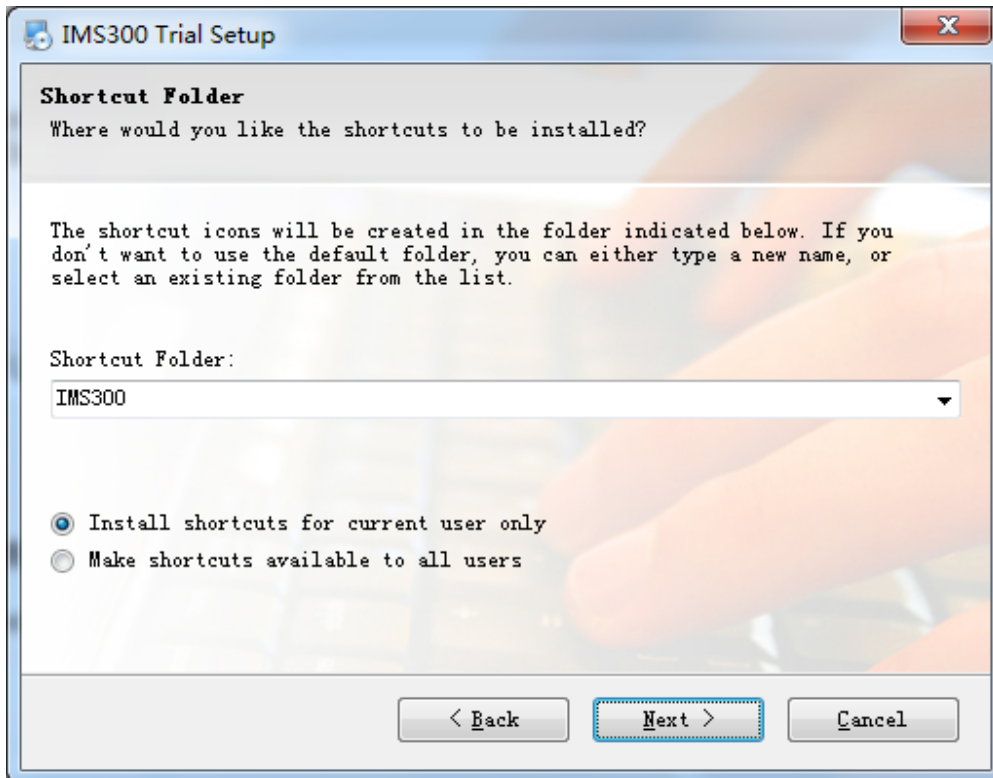


Figure 2-4

Step Six: Click **【Next】**, see Figure 2-5:

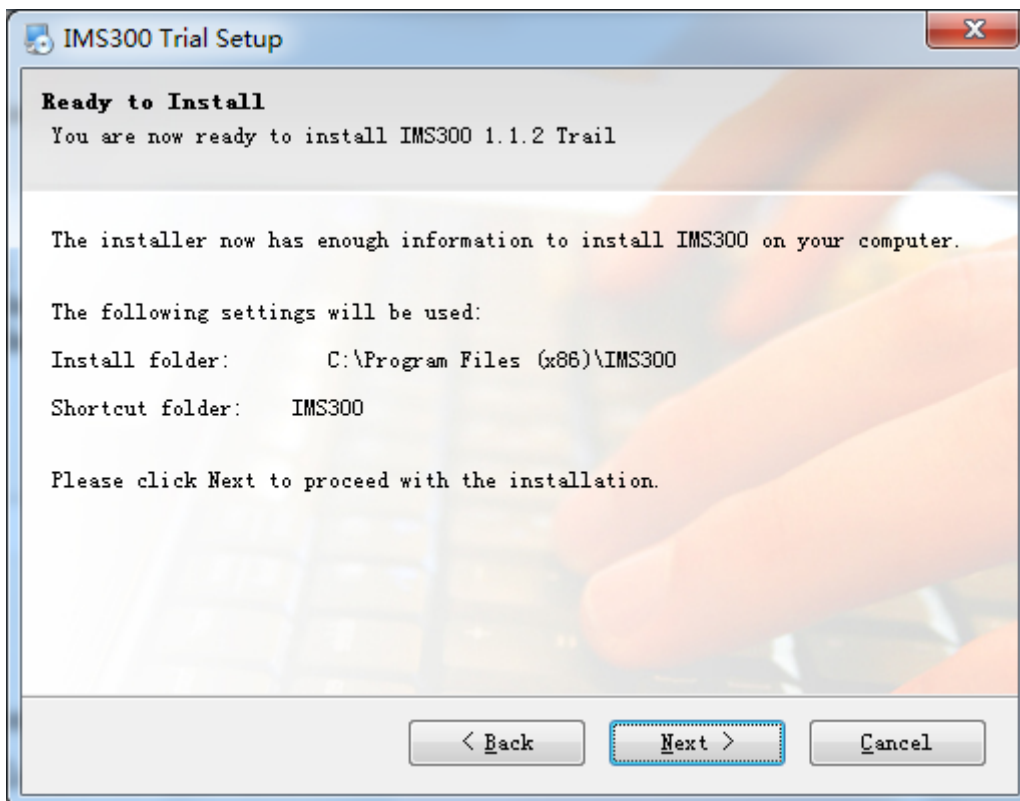


Figure 2-5

Step 7: Being installed files, please wait. see figure 2-6:

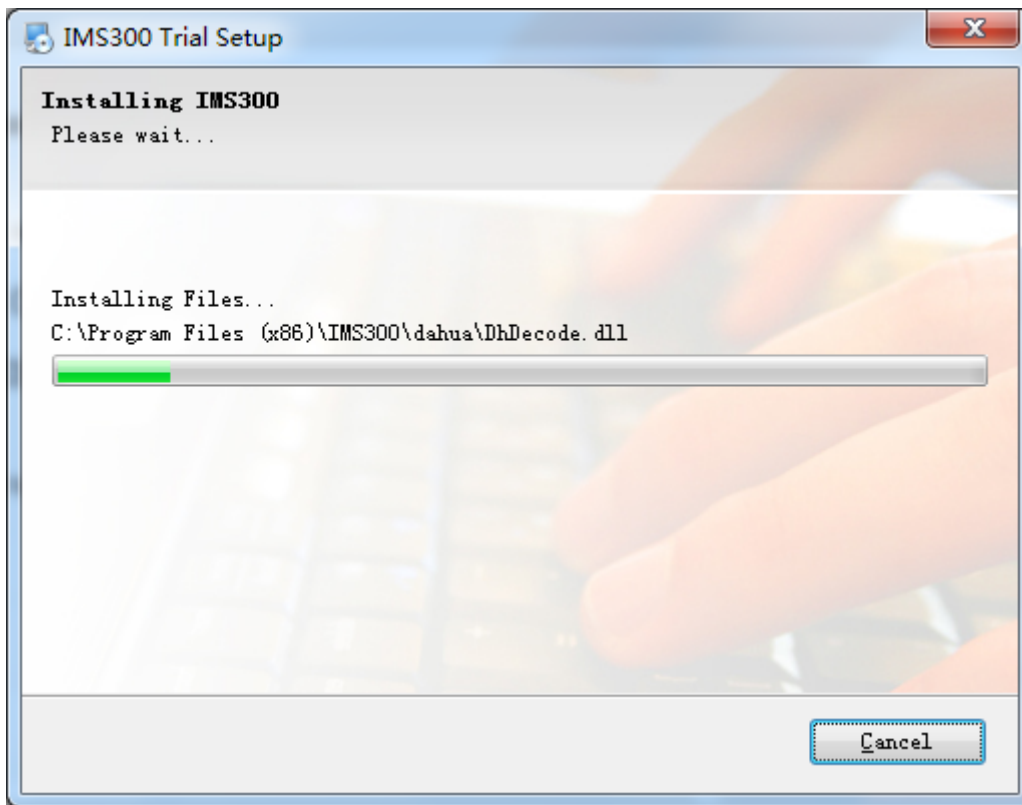


Figure 2-6

Step 8: Click [Finish], the installation is complete. As shown in figure 2-7:

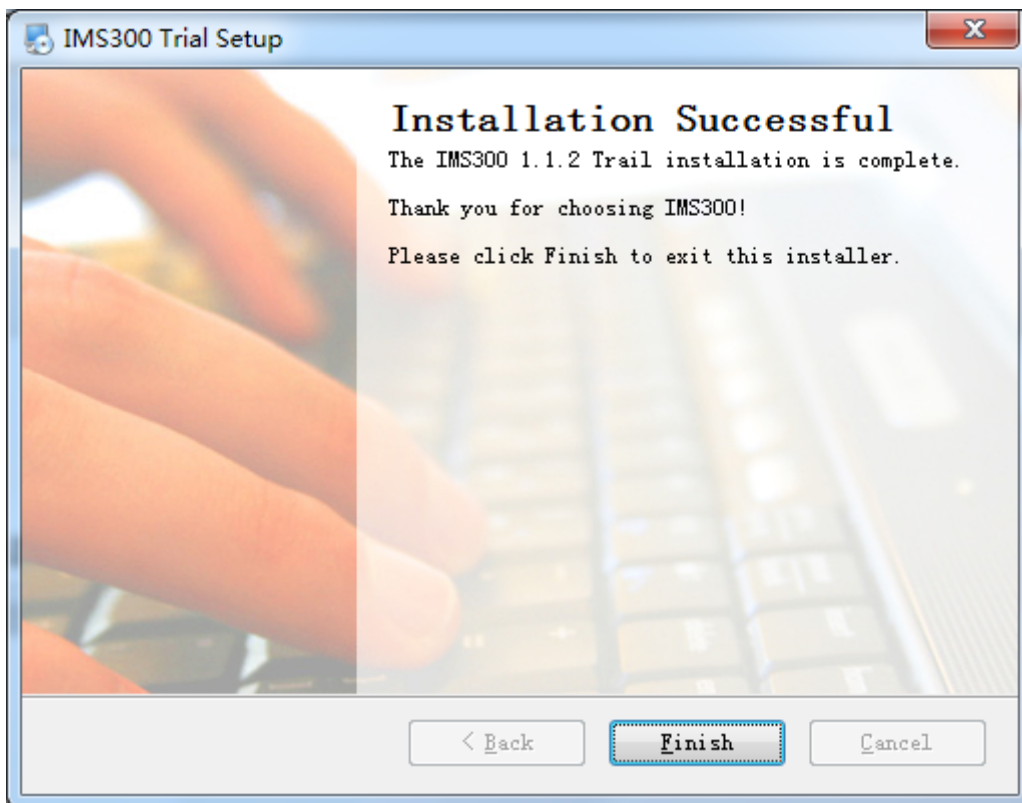



Figure 2-7

3 Quick Guide

3.1 The Client Login

Double-click  to run it, open login page, as shown in figure 3-1. Input Username and password, Click **【Login】** to log into the client.

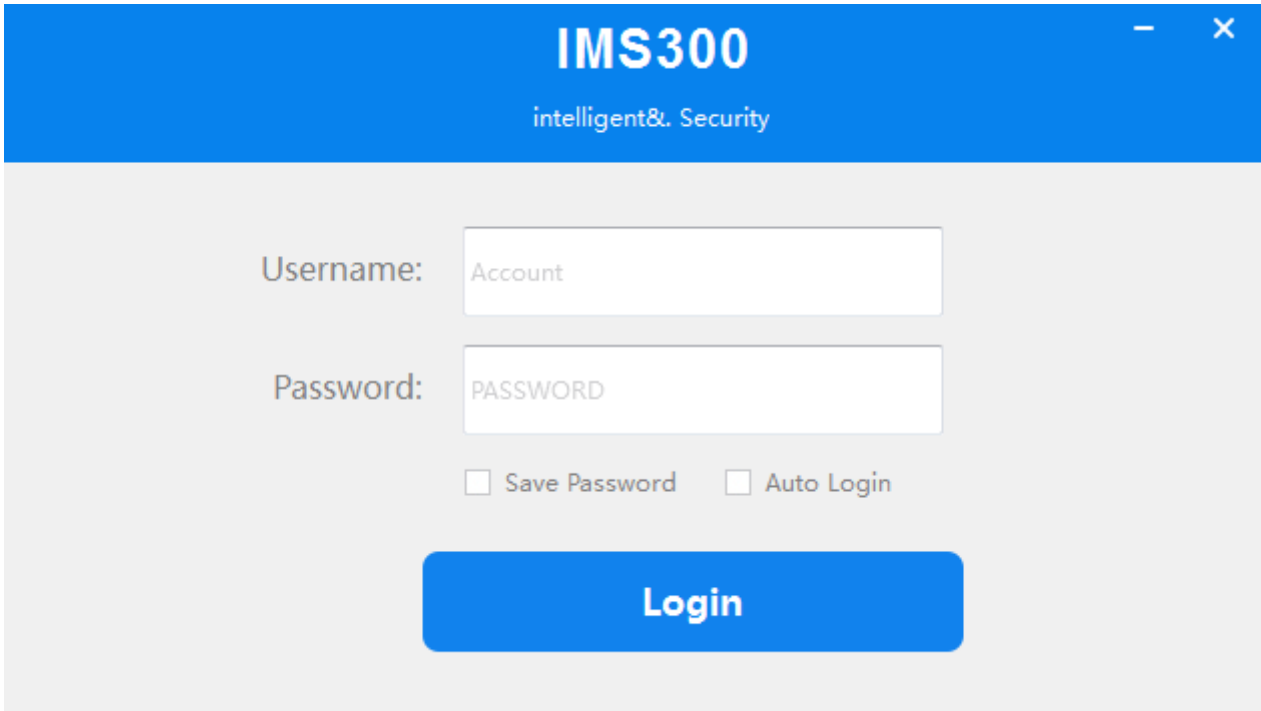


Figure 3-1 The client login

Check **【Save password】** and **【Auto login】**, it will log in current user next time by default.

3.2 Home Page Introduction

Clients homepage as shown in figure 2-6, it can be divided into sub-window area, business logic, alarm statistics, tool sets, alarm event.

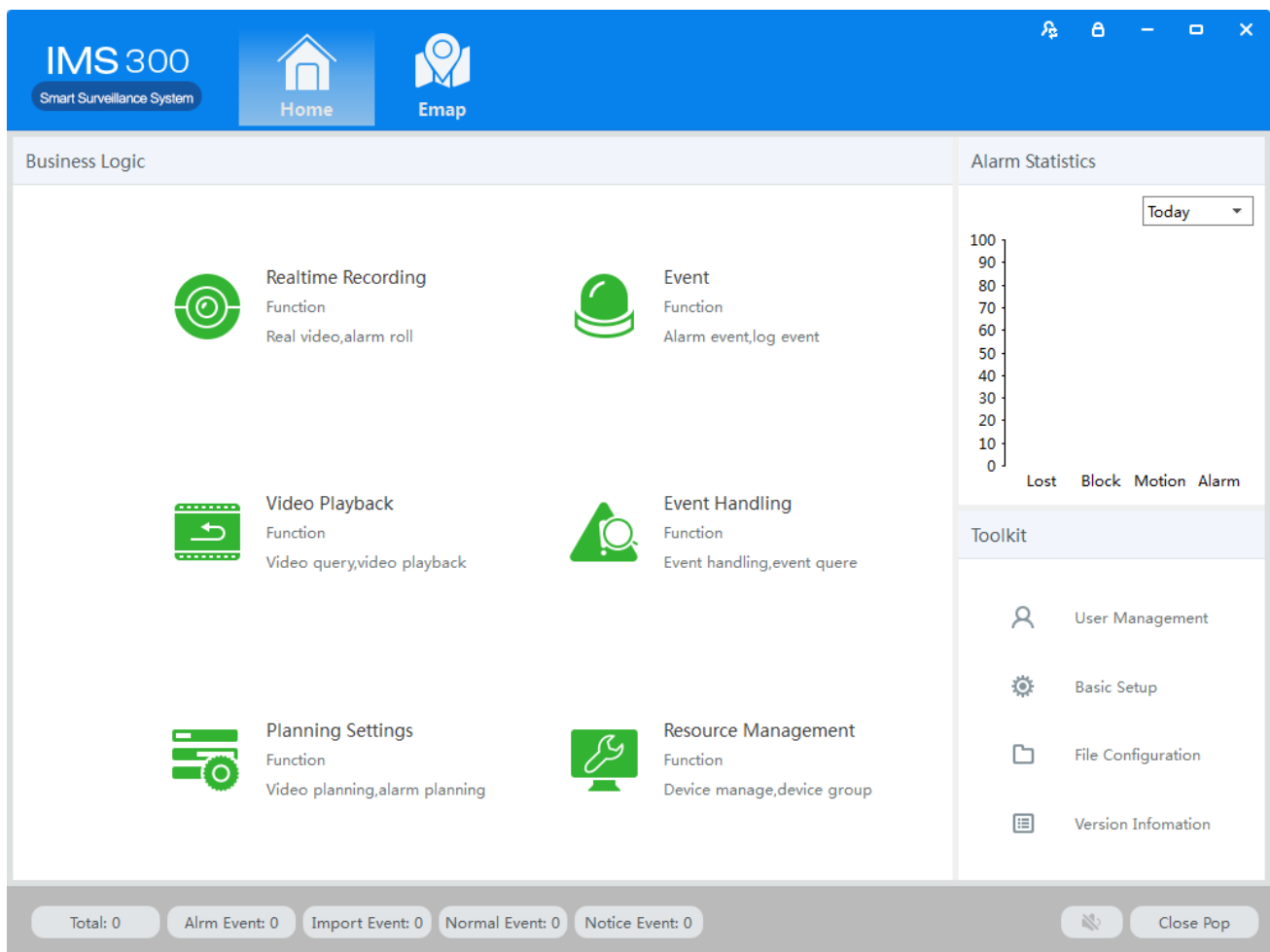







Figure 3-2 Clients homepage

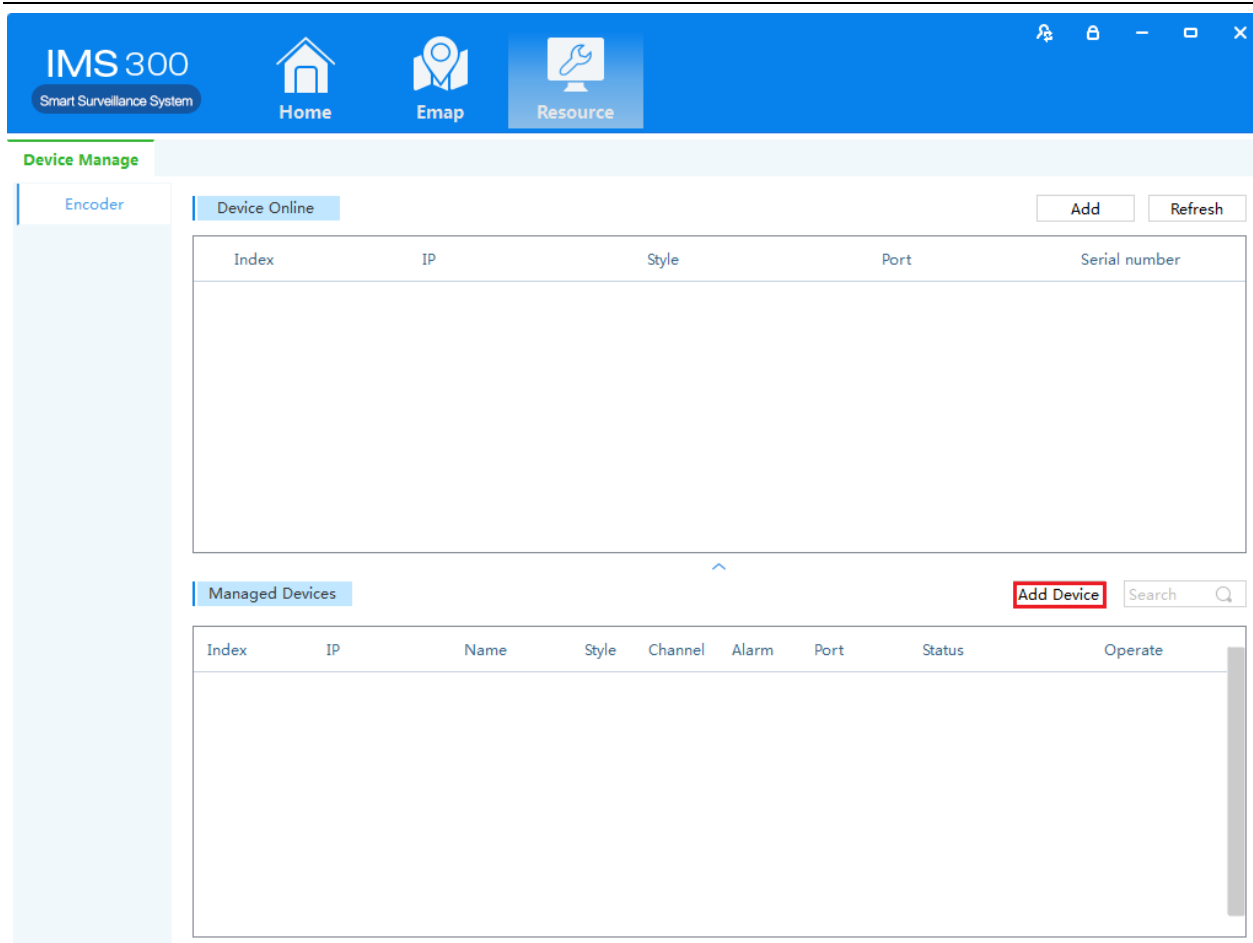
- Click  in right corner interface, switch to another user logged on to the client;
- Click  in right corner interface, lock the screen. After locking the screen, not able to operate the client. To unlock, need to be in [the screen is locked, enter the current user name and password to unlock] enter the current username and password in the prompt box to unlock;
- Click  in right corner interface, client interface can be minimized interface display;
- Click  in right corner interface, client interface can be displayed in full screen;
- Click  in right corner interface, be able to exit the client.

3.3 Device Management

3.3.1 Add Device

For the first time using the software, it is needed to add a device. Device online column shows all online device of current LAN.

Method 1: (1) Click **【Resource Management】** → **【Add Device】** , As shown in figure 3-3:



FFif

Figure 3-3 Resource Management

(2) Complete device information, then click **【Save and Continue】** or **【Save】**, then can see the device in the Managed Devices column. see “Figure 3-4”:

Device Name: <input type="text"/> *	Device Type: Encoder <input type="text"/>
Way to Login: Common Login <input type="text"/> *	Serial Number: <input type="text"/>
IP/Domain Name: <input type="text"/> *	Video Input: <input type="text"/>
Device Port: 8000 <input type="text"/> *	Alarm Input: <input type="text"/>
User Name: admin <input type="text"/> *	Alarm Output: <input type="text"/>
Password: <input type="text"/>	Intelligent Code: <input type="text"/>
Manufacturer: ZL <input type="text"/> *	

Group by Device

Figure 3-4 Decive Information

Method two: (1) Click **【Resource】** → **【Refresh】** , see “Figure 3-5”:

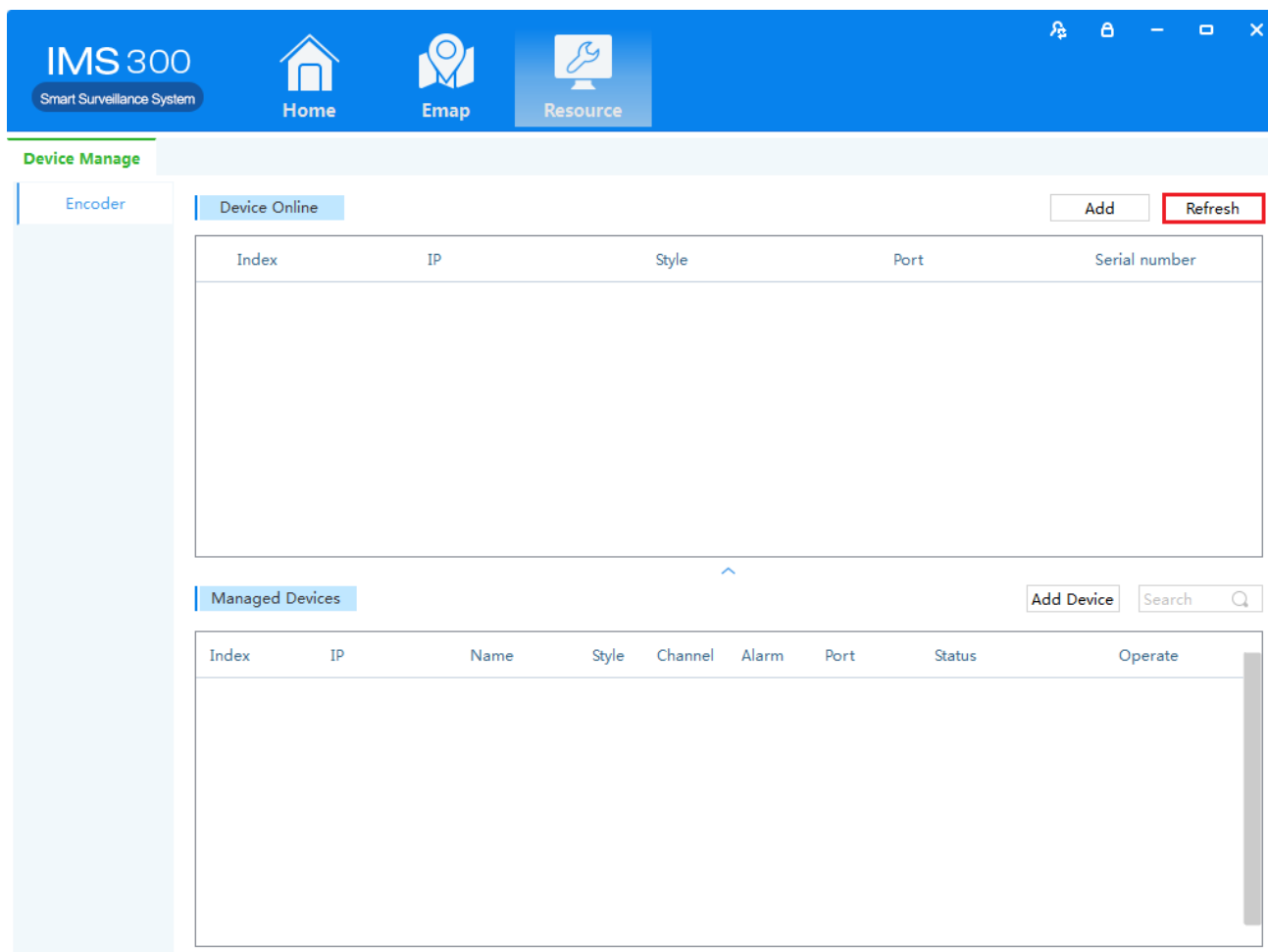


Figure 3-5 Managed Devices

(2) Complete the previous operation, the online device will show in the Device Online, select device you want to add, then click **【Add】** , you will see added device in the Managed Devices, see “Figure 3-6”:

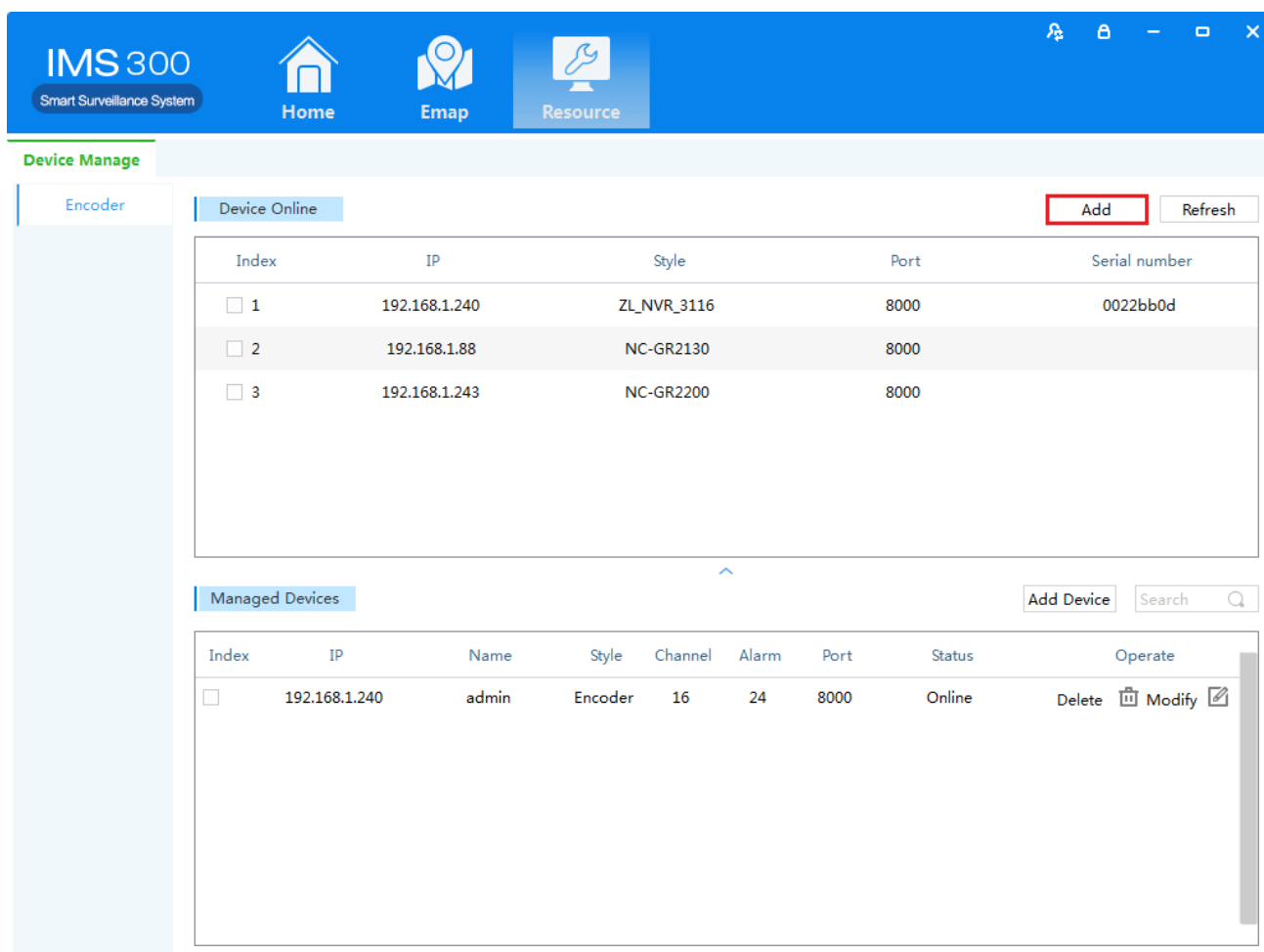


Figure 3-6 Managed Devices

3.3.2 Delect and Modify Device

In[Managed Devices]choose the added device,then click ,can delect the device.

In[Managed Devices]choose the added device,then click ,can modify the device.see figure 3-7:

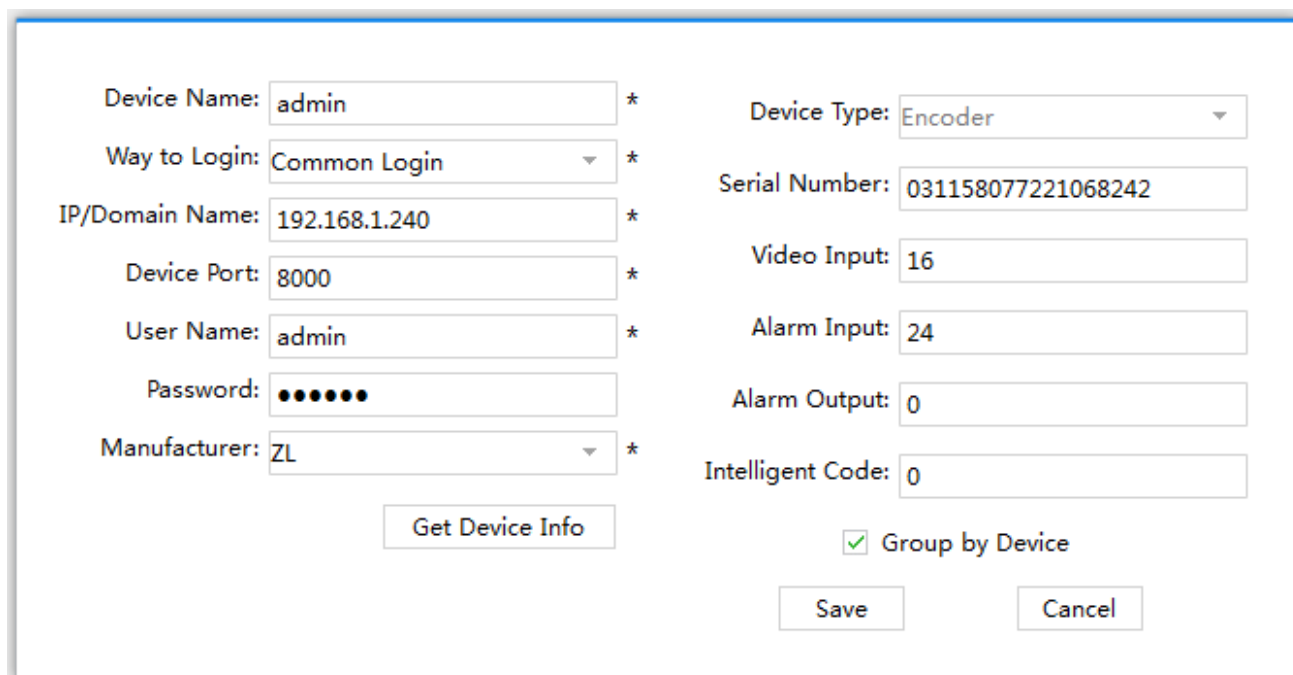


Figure 3-7 Add the device's network parameter

On this interface, user can change the device's parameter, like device's name, login type, device IP, device port, username, password and manufacturer etc. Then input administrator's password, and click Save to finish the parameter adding.

4 Video Surveillance

4.1 Real-time Video

IMS300 support realtime preview, local recording, snapshot, PTZ control etc.

4.1.1 Real-time preview

Steps show as below:

Step 1: click **【Realtime Monitor】** in business logic area, the system will show the realtime monitor interface;

Step 2: In the device list at the right side of interface, choose the channel and drag to video window; It will show the realtime monitor interface in video window. See below figure 4-1 .

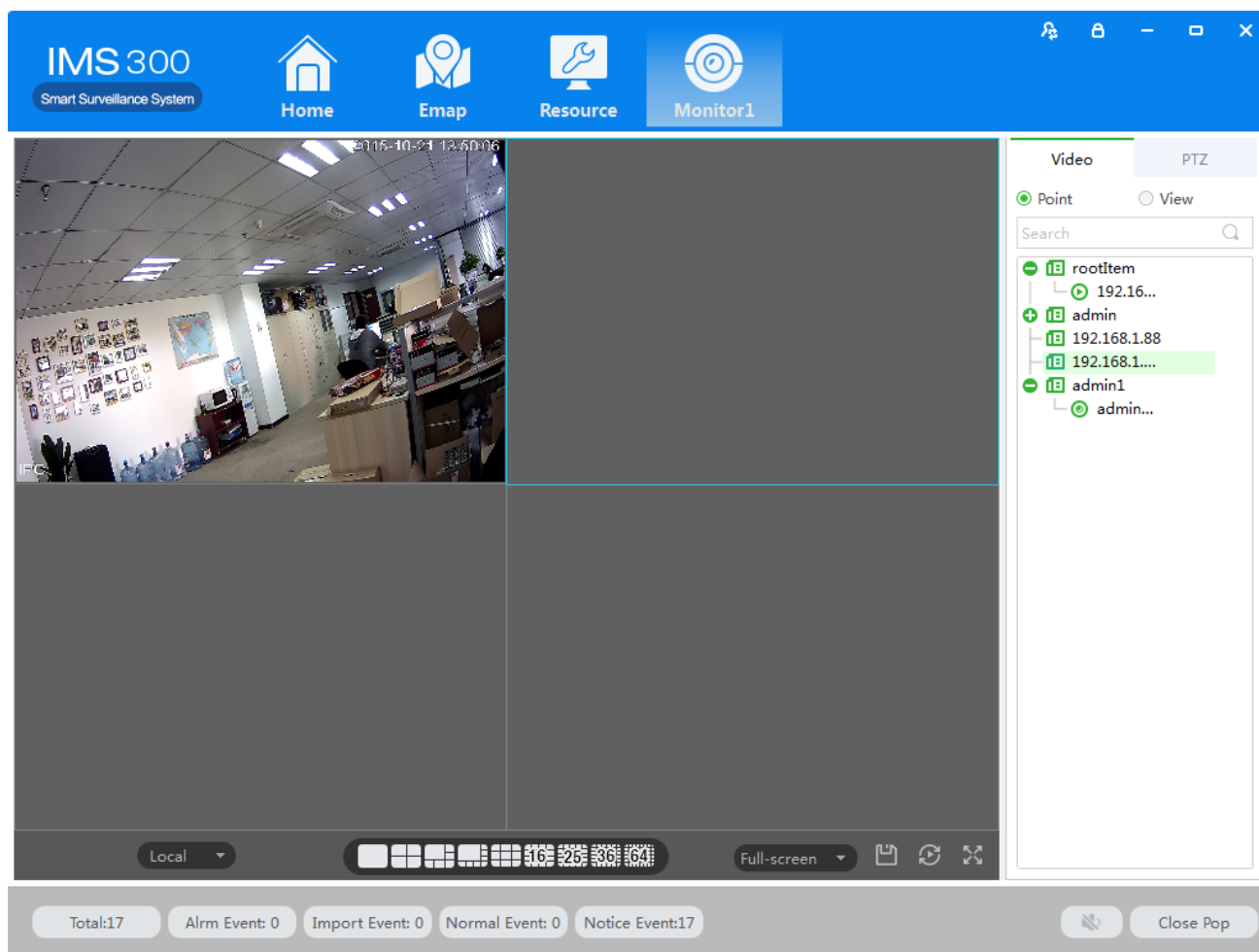









Figure 4-1 Real-time Video

No.	Item	Description
1	Stream Info	Show the channel stream information
2	Shortcut Operations	<ul style="list-style-type: none"> ●  PTZ: control operations direction up, down, left, right, upper left, upper right, left blew, right blew; ● Recording: turn on or turn off (Recording document was default save under default software local recording path); ●  Capture: capture current channel image (capture file was default save under default software local capture file path); ●  Recording playback: used for current channel video; ●  Region image: turn on or turn off electric enlargement; ●  Talkback: turn on or turn off pronunciation talkback; ●  Voice: turn on or turn off audio.
3	Local	Used for switch local and video wall.
4	Picture segmentation mode	Used for set screen segmentation mode.
5	Aspect Ratio	Choose video aspect ratio, which used to adjust picture size to original ratio or fit window
6	Save View	Saving current window layout and opened video source as the same image plan. After saving image plan, it can be performed at view plan of 【Plan Configuration】
7	Wheel Guard	Turn on or turn off current channel wheel guard
8	Full Screen	Switch Video Window to full screen, double-click video window or press Esc or click right click to choose “exit full screen”.
9	Device	Display equipment and channel .
10	PTZ	Setting up PTZ preset point, point to point wheel guard and auxiliary function .

4.1.2 Local Video

Recording operation step:

Step 1:Click video window  at bottom right of real-time preview or right click to choose [open recording].

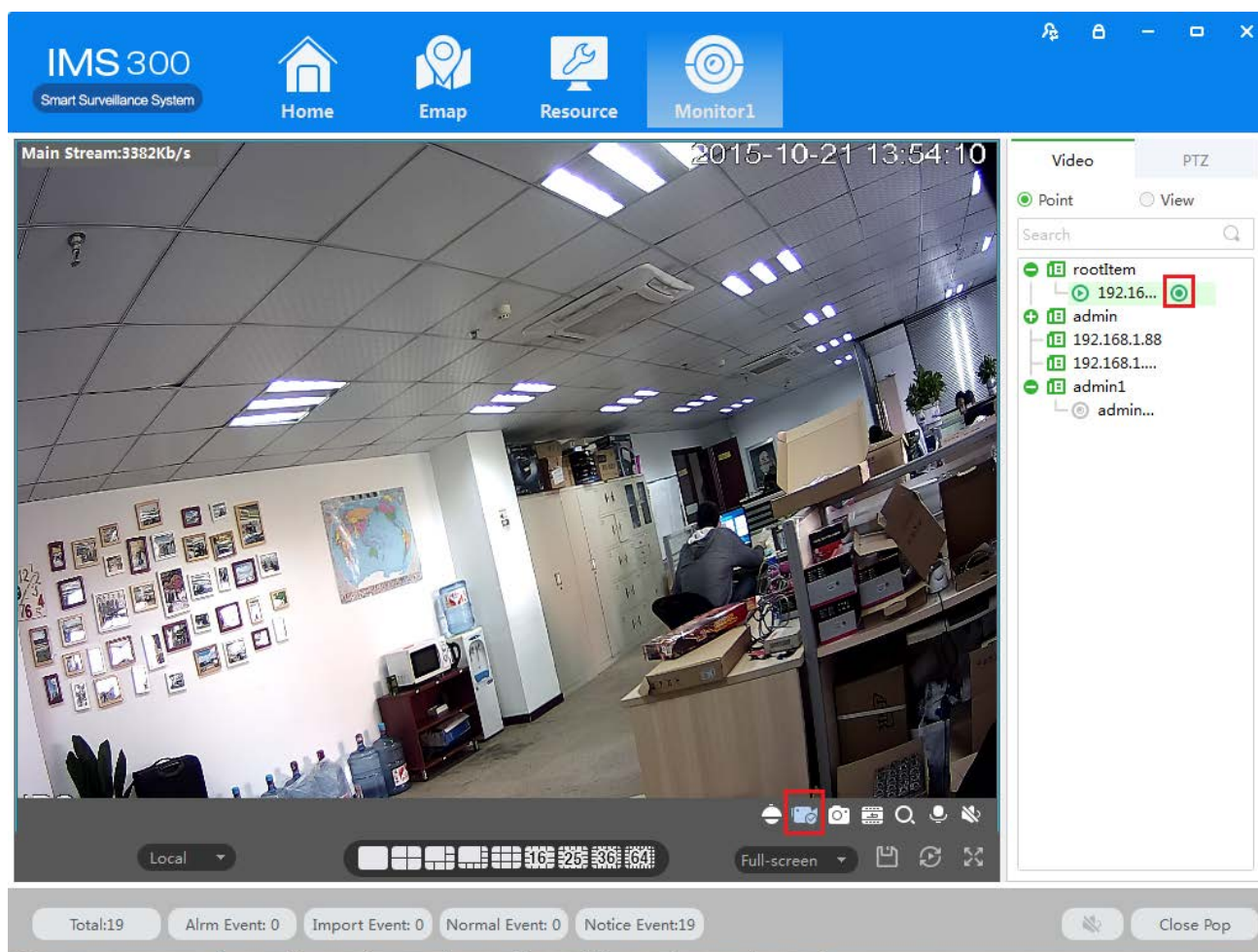



Figure 4-2 Local video

Step 2: Once recording finished, click  or right click [closed recording].

 : Statement: Modify image default save path under **【basic setting】** → **【document setting】** → **【recording setting】** .

4.1.3 PTZ Setting

Achieving speed dome camera full range monitoring by setting PTZ direction, preset point and point to point wheel guard.

Previewing speed dome camera monitoring image, click speed dome camera preview interface and the PTZ tabs at right side of the interface, the system display PTZ interface ,see figure 4-3.

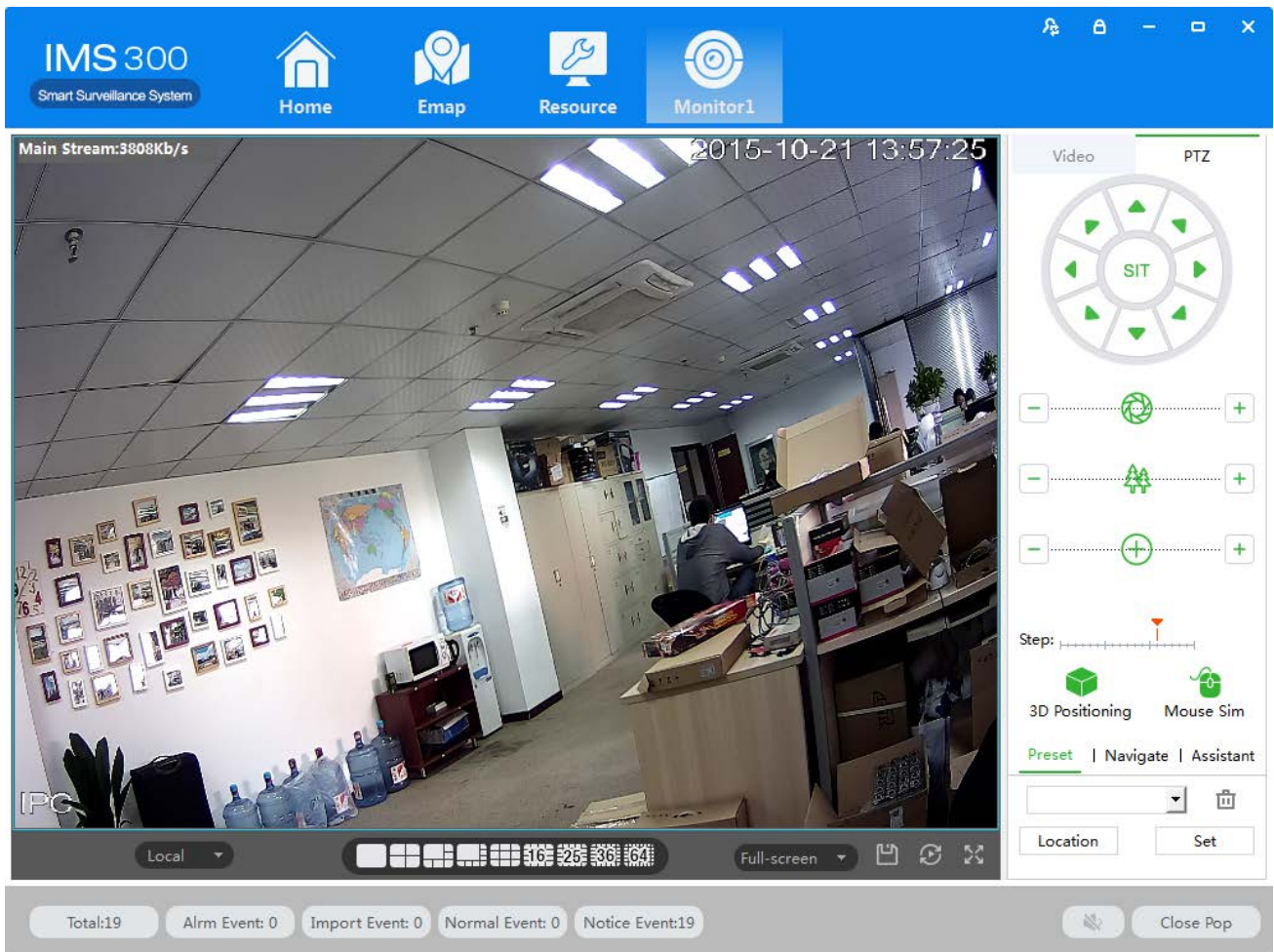


Figure 4-3 PTZ control

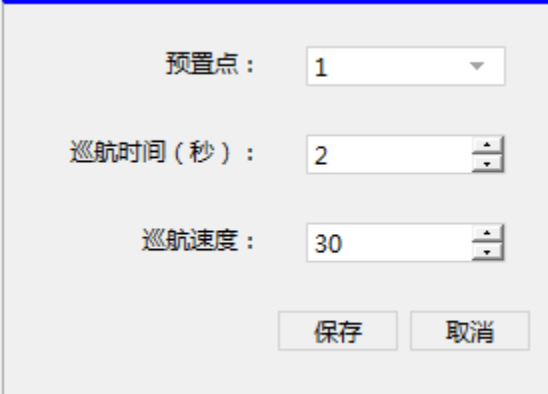
Parameters	Description
3D Positioning	Opened 【3D Positioning】 , controlling PTZ by mouse relative position in preset window.
Mouse Simulating	Using mouse to control eyeball camera.(the effect is same as 【Open PTZ】)
Direction key	Achieved 8 directions PTZ operation, up down left right upper left upper right, bottom left, bottom right.
SIT three-dimensional positioning	Clicking one point at video monitor interface, PTZ will turn to the point, and the point will move to middle point of screen, support zoom function , using mouse to drag in the monitor screen interface, drag frame support 1-36anamorphosis,pressing on mouse from upper left to bottom right, that will be larger,Pressing on mouse to drag, which from bottom right to upper left, that will be small . the frame size will be smaller,the multiple will larger, otherwise will be smaller. (the function just only use mouse to control.)
Step length	Used for PTZ turning speed, achieve 1-8 different turning step length setting.
Zoom	Control speed dome camera and do zoom operation.
Focusing aperture	For focus control, adjust the clarity. Adjust speed dome camera aperture, adjust brightness
Preset	Using direction button to turn PTZ to needing position, entering preset result in preset frame, put the button to save.
Point to point wheel guard	Achieve different wheel guard auto carry out.
Aux Function	Light on/off, Aux1 on/off, Aux2 on/off.

Preset Setting:

- Step 1: Moving camera to target position by clicking Direction Key
 - Step 2: Click preset point tabs;
 - Step 3: Input preset point name.;
 - Step 4: Click Setting, current monitoring area of the camera will be one preset point
- Set other preset at drop-down menu by clicking [Position]

Cruise Setting:

- Step 1: Click [Cruise];
- Step 2: Click **+**, [New Cruise] pop up;
- Step 3: After parameter setting, click [Save], See figure 4-4:



预置点 : 1

巡航时间 (秒) : 2

巡航速度 : 30

保存 取消

Figure 4-4 New Cruise

Select cruise at Cruise between points tab, Click **▶**, Cruise start; Click **✎**, Modify setting cruise line.

5 Video Playback

Recording could be checking by channel, time and different type and replay/edit.

5.1 Video Playback

Detailed playback operation steps:

Step 1: Click [Playback] (see Figure 3-2,section 2), it will show [Playback] interface, see figure 5-1:

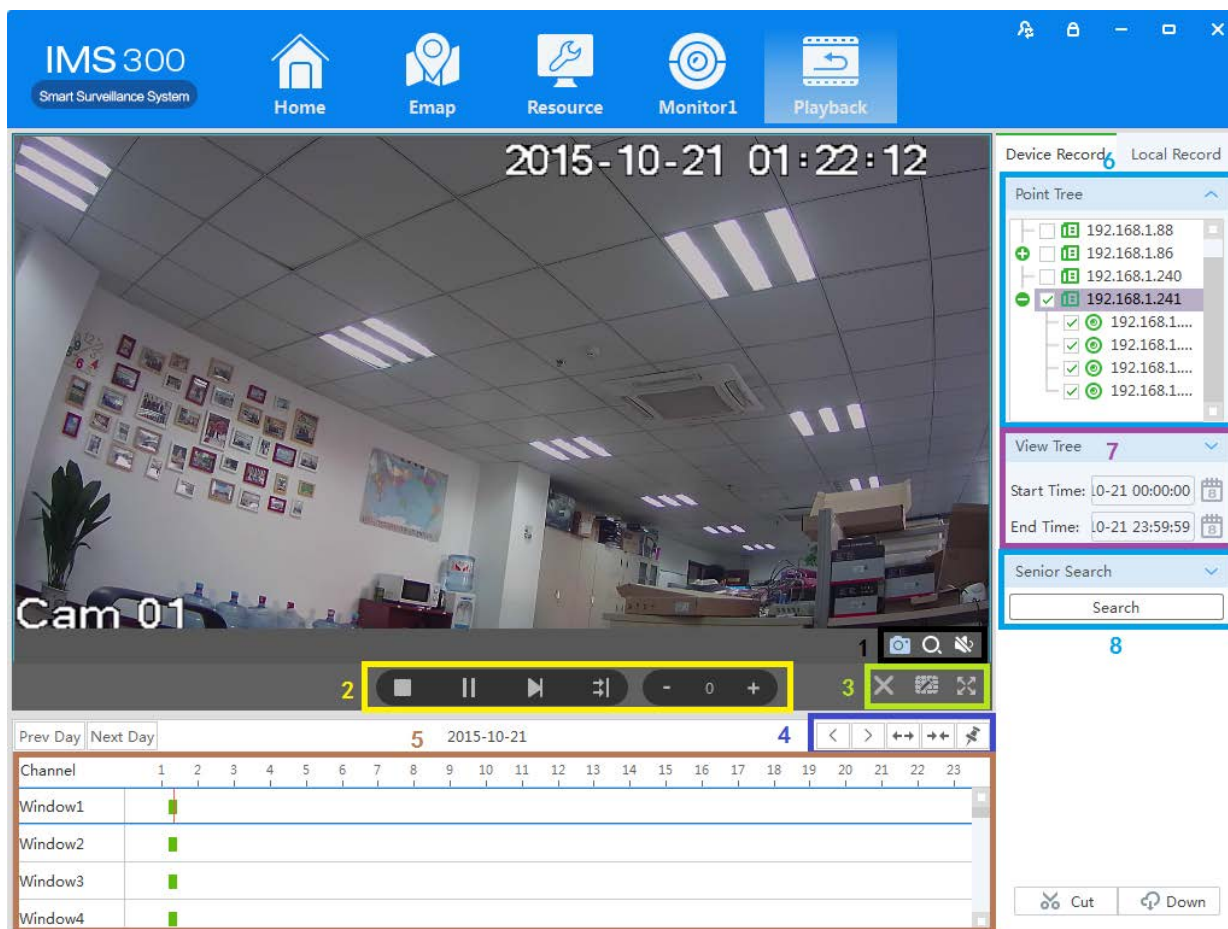


Figure 5-1 Video playback

No	Item	Description
1	Shortcut Key	<ul style="list-style-type: none"> ● Screenshot: Screenshot on current recording; ● Area Image: Elec-amplify on/off; ● Voice: Adjust voice of current recording.
2	Play Toolbar	<ul style="list-style-type: none"> ● Stop: Stop playback on current channel; ● Pause: Pause/play on current channel; ● FF: Fast forward on current channel; ● Synchronization: Multi-channel replay Synchronization; ● Slow down: Slow down replay on current channel; ● Speed up: Speed up replay on current channel.
		<ul style="list-style-type: none"> ● Stop all: Stop all replay;

3	Window Shortcut	<ul style="list-style-type: none"> ● Division: Division current replay user-defined ● Full Screen: Switch to Full Screen.
4	Time Schedule Control	<ul style="list-style-type: none"> ● Left: Time schedule move left; ● Right: Time schedule move right; ● Zoom in: Time schedule unit amplification; ● Zoom out: Time schedule unit reduced; ● Watermark: Watermark for current recording.
5	Time Schedule Bar	Choose replay position on current channel.
6	Point Tree	Device/channel display.
7	View Tree	Date of recording
8	Advanced Search	Recording searching.
9	Video Cut/Download	Cut/Download Video.

Step 2: Choosing device channel at upper right side.

Step 3: Choosing starting/ending time, click [search]

Available recording will be shown at time schedule bar when searching finished, Figure 5-2:

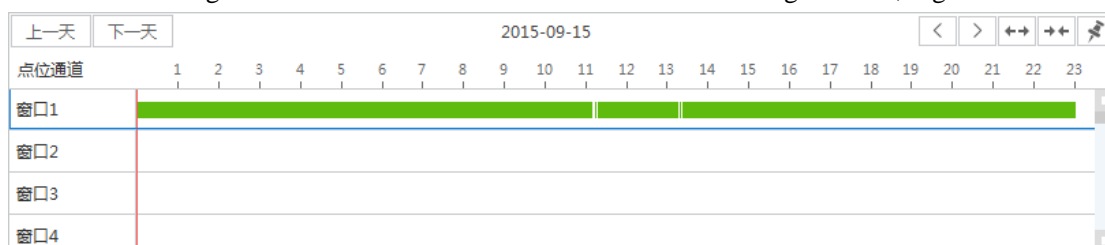


Figure 5-2 Recording search

Step 4: Choosing target channel, click , recording replay, see figure 5-3

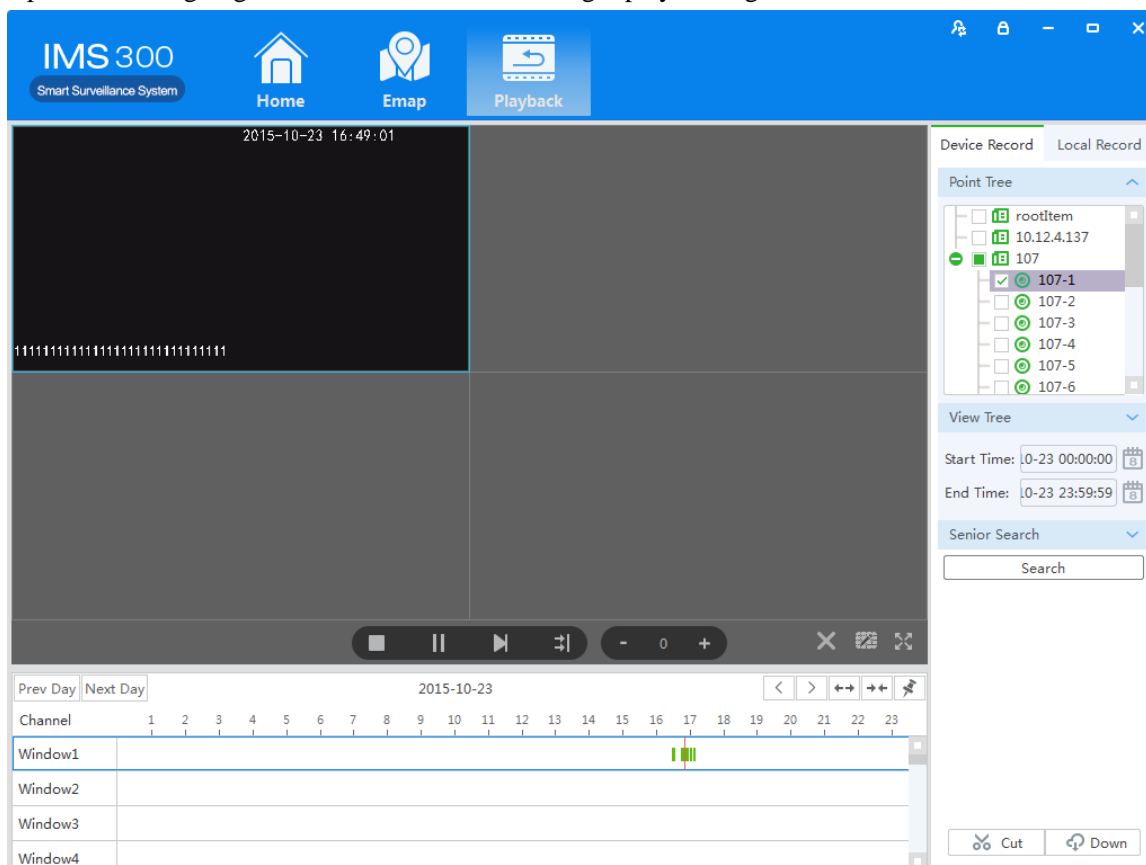




Figure 5-3 Playback

5.2 Video cut and download

Step1: Click  from the clip download area(No.9 area of Diagram5-1) of 【Playback】 interface. Then mouse will show as  in time bar.

Step2: Left click to select start point at the channel time bar which want to clip, Then left Click again at another position to select the end point. See figure 5-4:

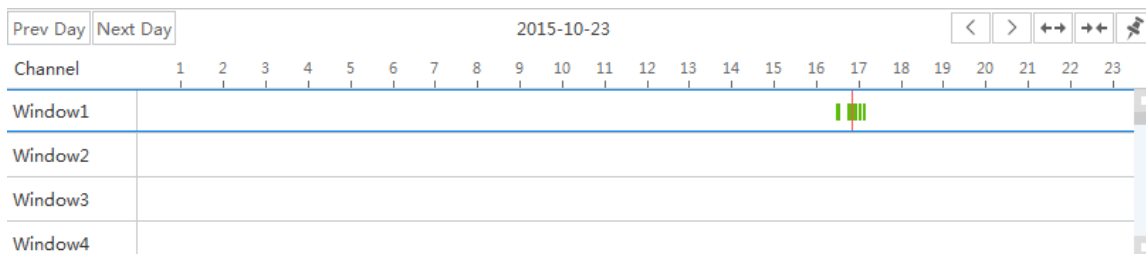


Figure 5-4 Video cut and download

Step3: Right click at the time bar to select 【Plan Add】 after you select the starting point and end point;

Step4: Continue click  at the video clip area (No.9 area of figure5-1)), see figure 5-5;

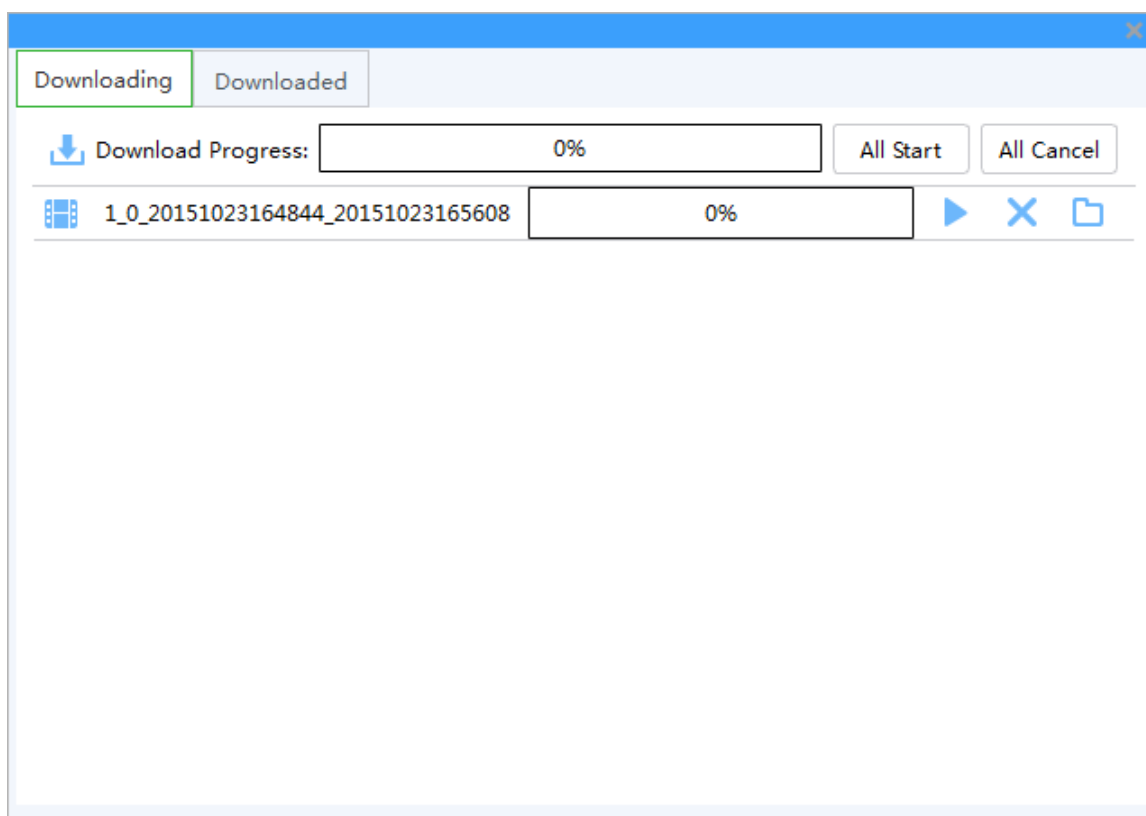
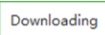
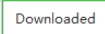






Figure 4-5 Video download

Item	Name	Description
	Downloading	Display the current progress of the download tasks
	Finish	Display download task has been completed
	Start	Start all download tasks in list
	Start/ Suspend	Start to download current task
	Cancel	Cancel download current task

	Open	Open the folder which video download
---	------	--------------------------------------

Step5: click or  To download of editing video

Step6: click to check the video clip after downloaded, see figure 5-6:

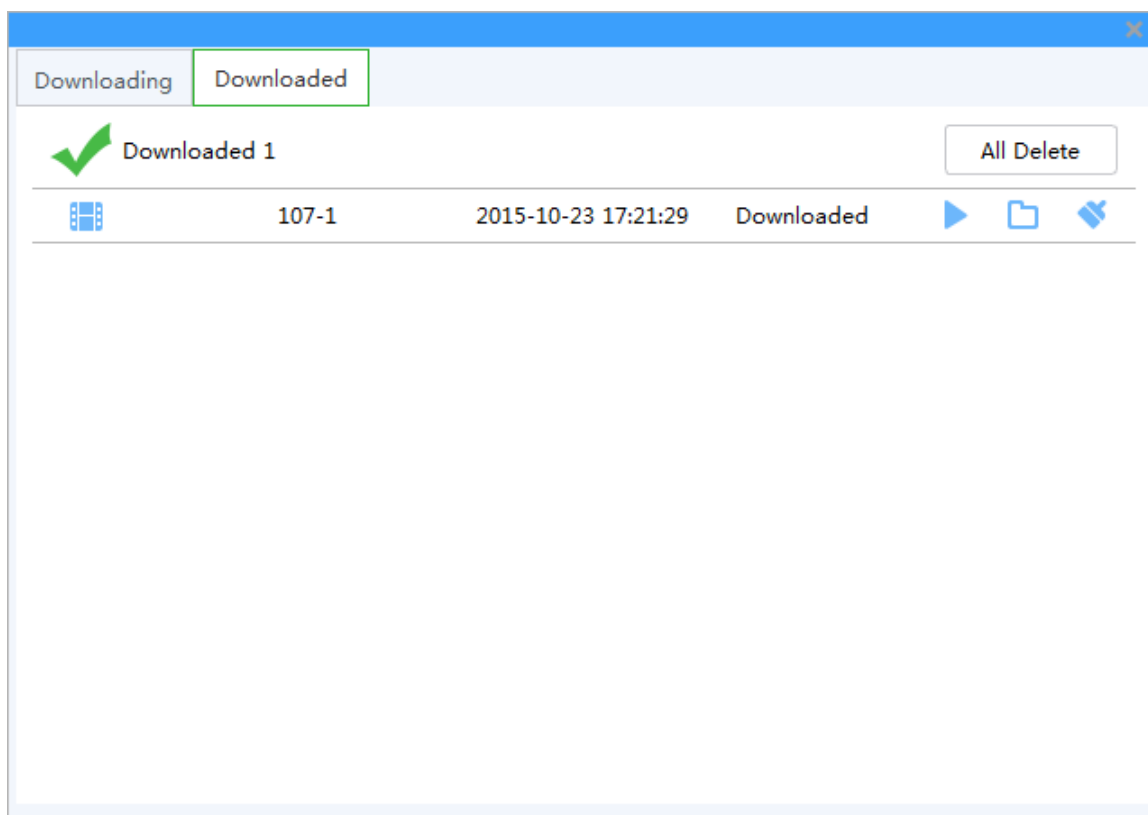



Figure 4-6 Finished list

Item	Name	Instruction
<input type="button" value="All Delete"/>	Delete all	Remove all finished download in list
	Play	Play currently finished download
	Open	Open the folder where video download
	Cancel	Remove currently finished download

6 EMap

EMap can quickly learn the location of the camera, and alarm host deployed, it is closely related to alarm function, when alarm occurs on the map, there is alarm hint, and according to this, we can take immediate protect action.

6.1 Map add

EMap associated with group, a group can add one EMap.

The specific steps of the add EMap as below:

Steps 1: Click **EMap** at window area (see figure 3-2 picture 1).

System display **EMap** interface, see figure 6-1:

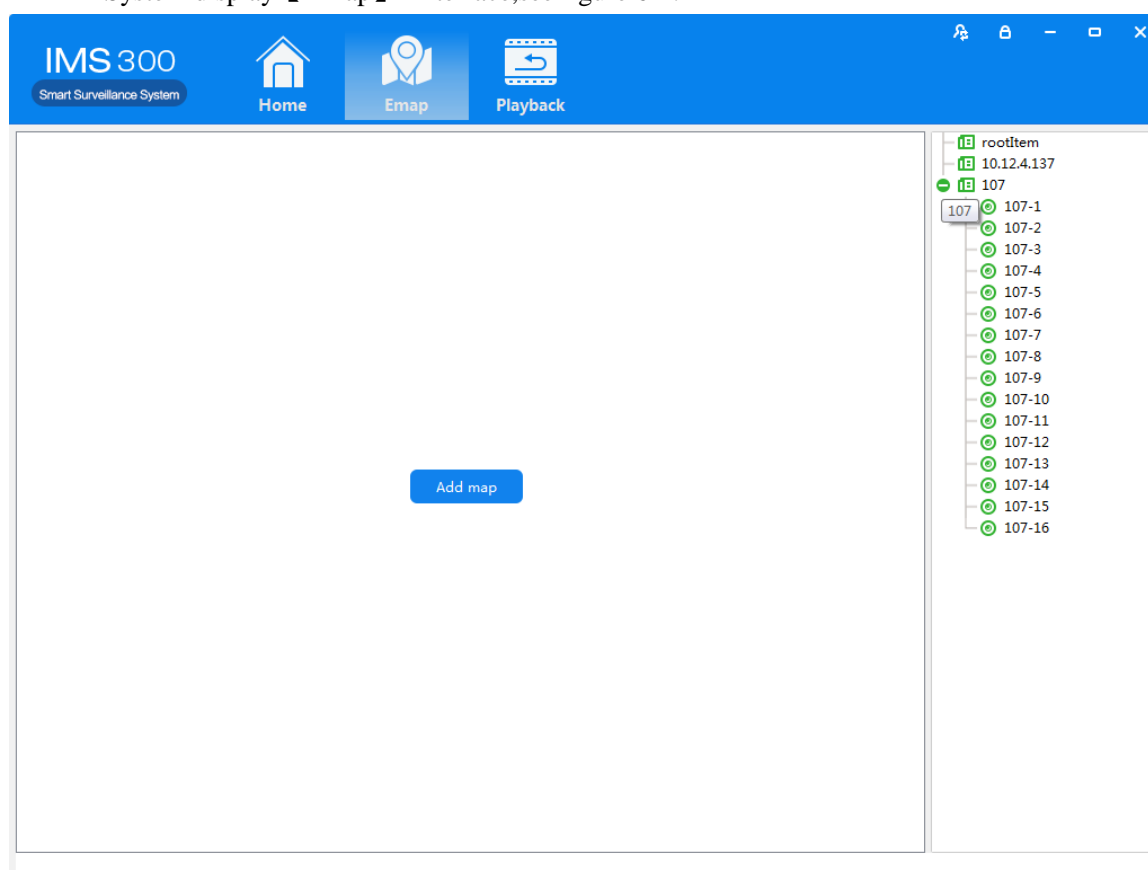


Figure 6-1 EMap

Step 2: After add EMap name, click [Preview] to find pic file in PC, click [OK] to complete adding EMap. See figure 6-2:

Figure 6-2 Map Add

Step 3: After success to add EMap, it will turn to default [Preview Model]. After add EMap, see figure 6-3:

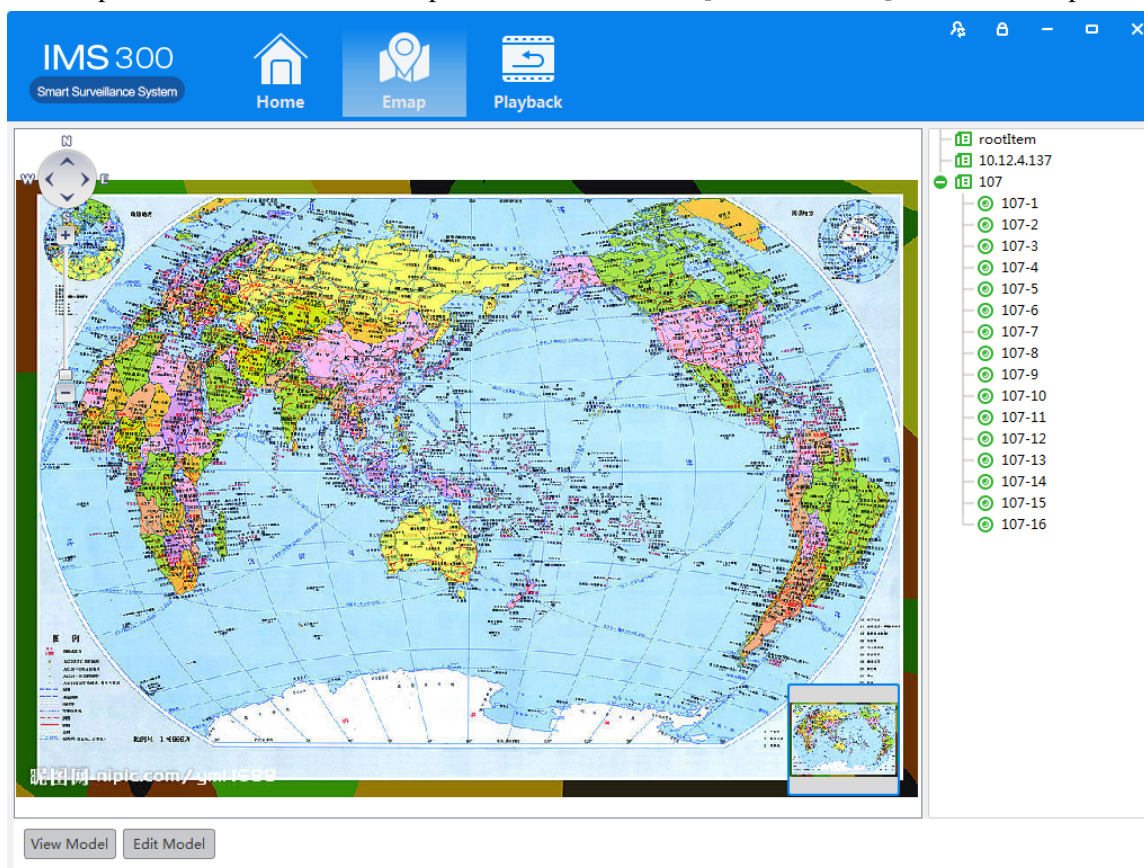


Figure 6-3 EMap Adding Complete Interface



: The map pic format should be png,jpg,or bmp.

6.2 Edit Map

The specific steps of editing map as below:

Step 1: Click [Edit Model] at toolbar, see figure 6-4:

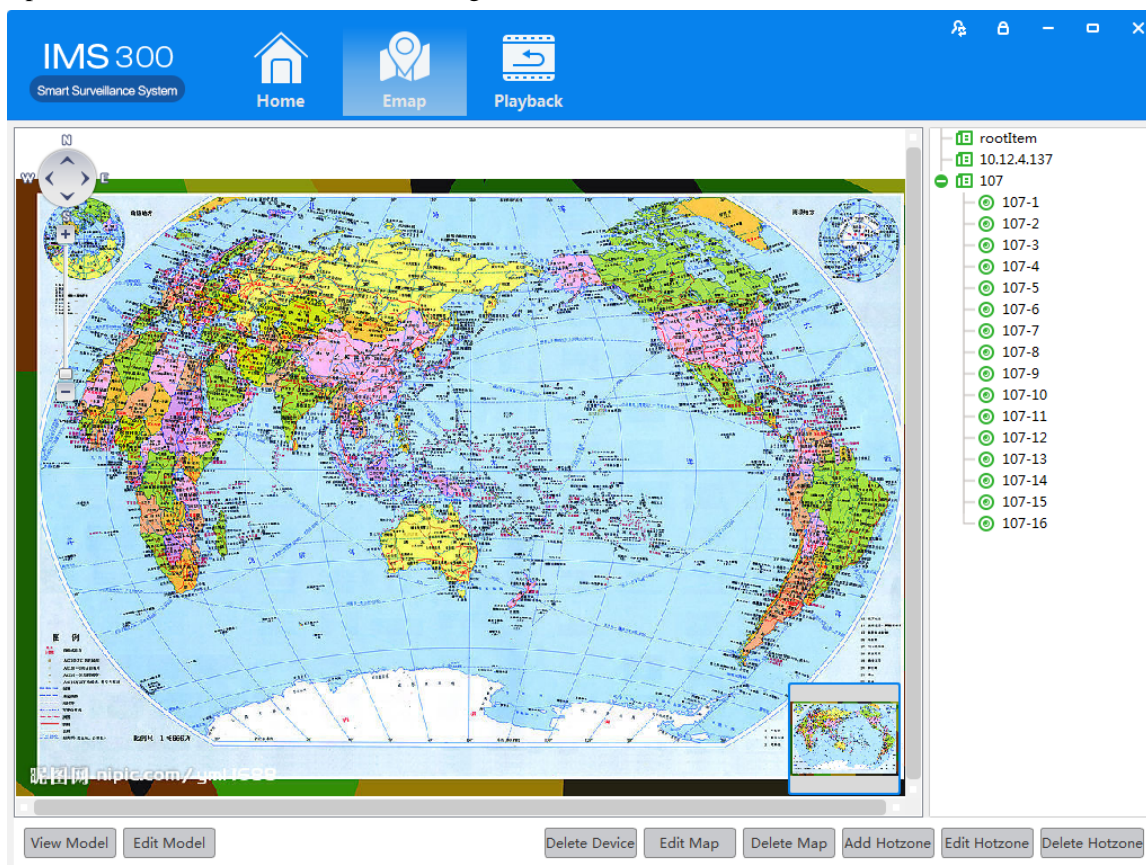


Figure 6-4 Edit Model

Step 2: Click [Edit Map], see figure 6-5:

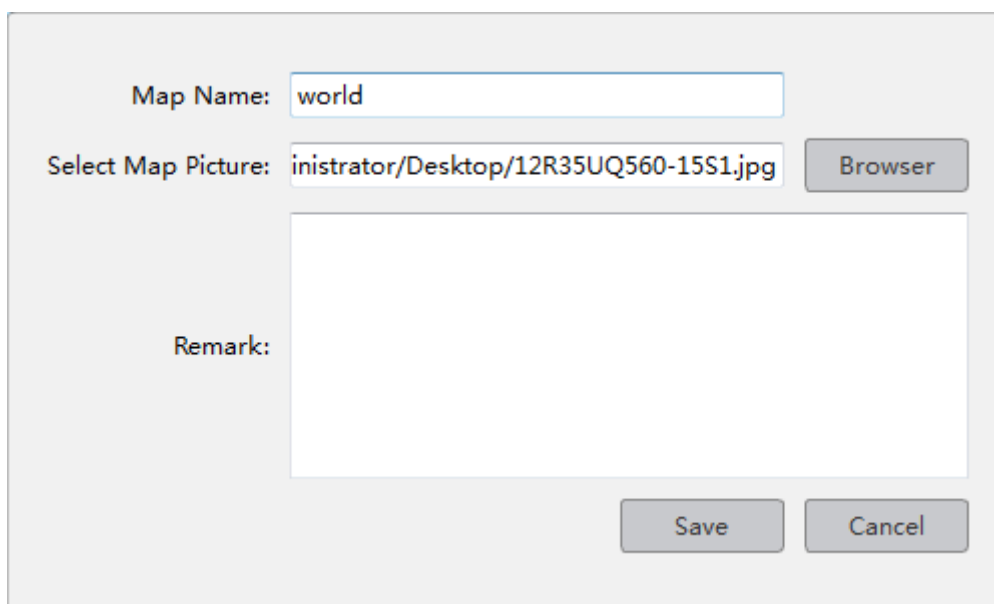


Figure 6-5

Step 3: Choose map, modify the name and click **【Save】** to finish the map modification.

Delete the current map operation:

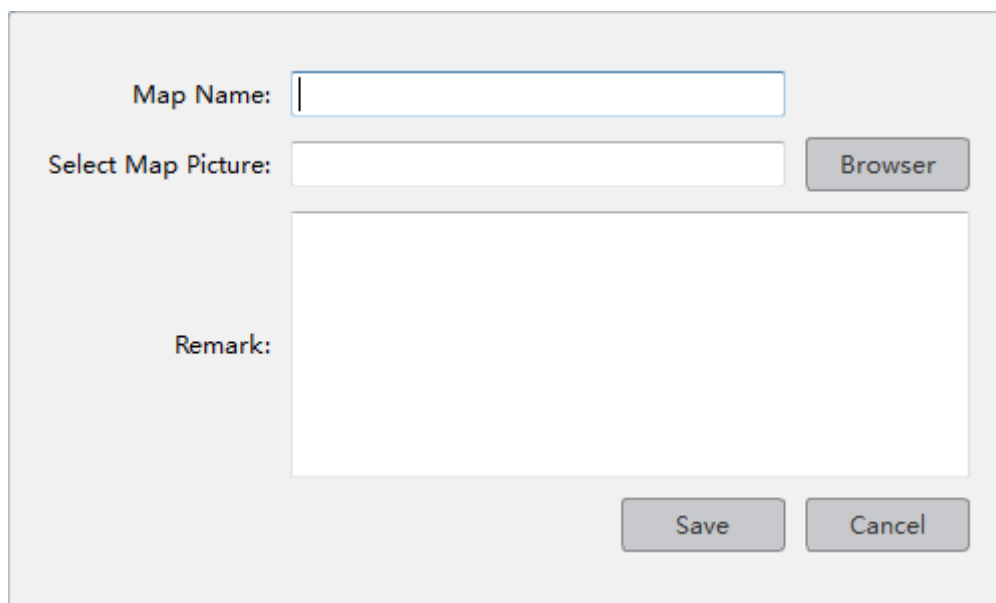
Click **【Edit Mode】** → **【Delete Map】** to delete the current map in the menu.

6.3 Add HotSpots

Set submap of related map by hotspots configuration under editor state of the map.

Adding hotspots steps:

Step 1: Click **【Add Hotspots】** under editor mode of the map ,see figure 6-6.



The screenshot shows a dialog box for adding hotspots. It has a light gray background and a thin border. At the top, there is a label 'Map Name:' followed by a white text input field. Below that is a label 'Select Map Picture:' followed by another white text input field and a gray button labeled 'Browser'. Underneath is a large, empty white text area with the label 'Remark:' to its left. At the bottom right, there are two gray buttons labeled 'Save' and 'Cancel'.

Figure 6-6 Add HotSpots

Step 2: Fill in the map name, click **【Browser】** to find the photos in the local PC, choose one photo and click **【OK】** to add this map ,see figure 6-7

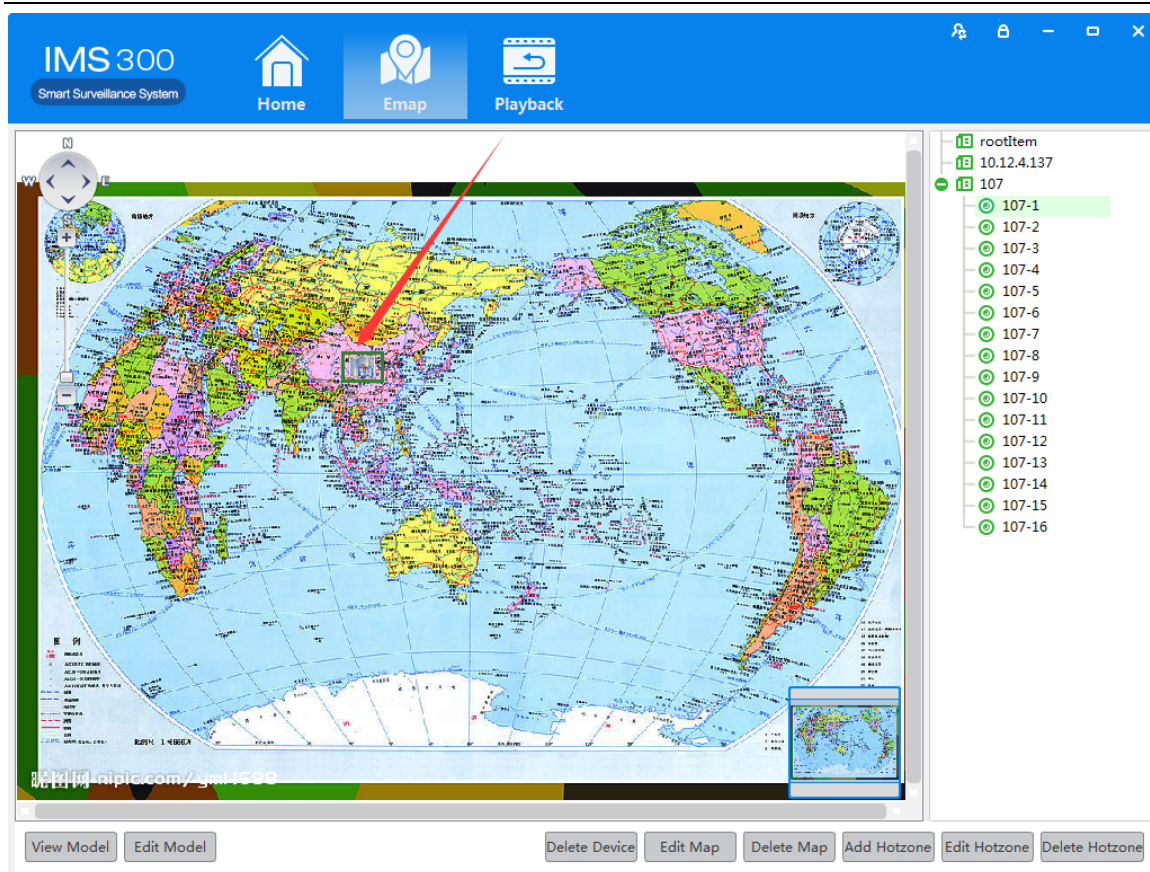


Figure 6-7 HotSpots Adding Complete Interface

When you finish all the above steps, you can click the hotspots icons to go into the submap.

6.4 Edit HotSpots

You can edit the hotspots when it is necessary:

Step 1: Choose the hotspot you want to edit and click **【Edit Hotspot】**, see figure 6-8

The 'Edit Hotspot' dialog box contains the following elements:

- Map Name:** A text input field containing the word 'China'.
- Select Map Picture:** A text input field containing the file path 'Administrator/Desktop/sy_59570127254.jpg', followed by a 'Browser' button.
- Remark:** A large empty text area for entering a remark.
- Buttons:** 'Save' and 'Cancel' buttons at the bottom right.

Figure 6-8 Edit HotSpots

Step 2: Modify the name and photo of hotspots map, click **【Save】** to finish the modification.

Delete current hotspot map operation:

Click **【Edit Mode】** → **【Delete Hotspot Map】** to delete the current map in the menu.

7 Alarm Event

There are two parts of alarm centre event, one is event center, another is event handling:

7.1 Event Center

IMS300 alarm center supports check and deal with all kinds alarm events.see figure 5-1:

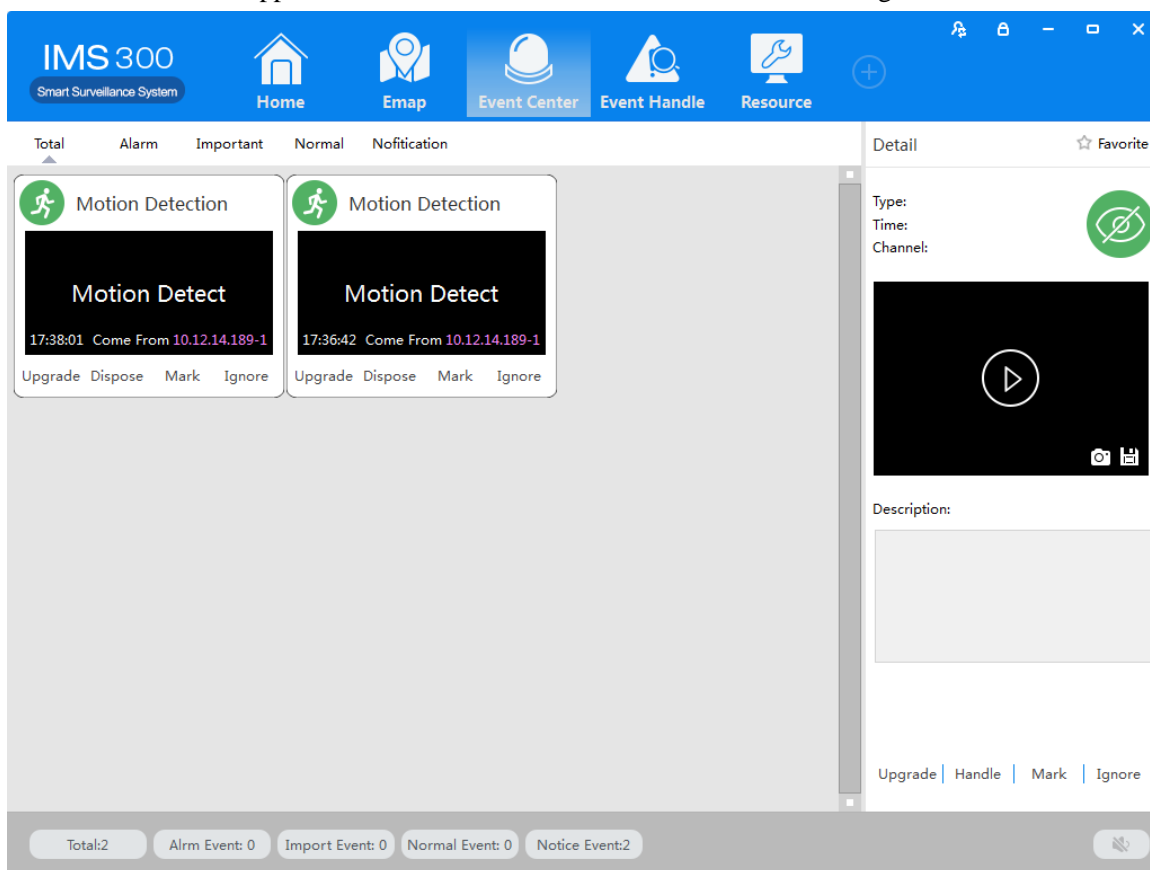


Figure 7-1 Event Center

7.2 Event Handling

[Event Handling]Show event by channels

The screenshot displays the 'Event Handle' section of the IMS300 client. At the top, a blue navigation bar contains icons for Home, Emap, Event Center, Event Handle (selected), and Resource. Below this is a table with the following data:

No.	Time	Type	Alarm Type	Channel	Status	Opinion	Favorite
ification Event#1	2015-10-23 17:36:...	Motion De...	Prompt Ev...	10.12.14.189-1	Non-alarm		☆

To the right of the table is a control panel with the following elements:

- Buttons for 'Run Event' and 'Operate Event'.
- Radio buttons for 'Point Chann' (selected) and 'History'.
- A search input field.
- A tree view showing a hierarchy of IP addresses: rootitem, 10.12.4.137, 107, 10.12.14.189, 10.12.14.189-1 (selected), and 192.168.1.114.
- Time selection fields for 'Begin Time' (10-23 00:00:00) and 'End Time' (10-23 23:59:59).
- Dropdown menus for 'Event Type' (All) and 'Handle Type' (All).
- A 'Search' button.

At the bottom of the interface, there is a pagination bar showing 'Current Page 1 / Total 1 Pages , Total 1 Records' and buttons for 'Export' and 'Export All'.

Figure 7-2 Event Handling

8 Configuration Management

8.1 Basic Settings

Configure the basic parameters of the client when users log in the IMS300 for the first time.

Detailed process as described below:

Step 1: Click [Basic Configuration] of Tool in the home page of the client. (See area 4 of Figure 3-2)

[Basic Configuration] see figure 8-1:

Figure 8-1 Basic Configurations

Item	Description
Log save time	Set the save time of log, 7day, 15days, 30days, 60days and 90days optional.
Display Ratio	Set the display ration of video. Full screen, original size, 16:9 and 4:3 optional.
Play Performance	Set play performance of video play and video realtime preview. Quality priority and fluent priority optional.
Snapshot Format	Set the picture format for sharpshooting and saving. JPEG and BMP optional.
Time Scale	Set time scale of client, 12-hour and 24-hour optional.
Time Settings	Set client time, sync local time by clicking sync time.
SystemLanguage	Set the language of client, Chinese and English optional.

Step2: Click[save] after finish setting.



: Click [default] to reset local configuration

8.2 File Settings

Detailed process as described below:

Step1: Click [Document Configuration] in the home page of the client(see figure 3-2 area 4).

【Basic Setting】 interface as figure 8-2:

Figure 8-2 File Setting

Name	Parameter	Description
Audio Alarm	Video Shade	Set video shade alarm
	Motion Detection	Set motion detection alarm
	Video Lost	Set video lost alarm
	Tripwire Intrusion	Set tripwire alarm
	Region Intrusion	Set Region intrusion alarm
	Face Detection	Set face detection Alarm
	Disk Error	Set disk error alarm
File Path	External Alarms	Set external alarm
	Capture Path	Set save path of captured pictures
	Recording Path	Set save path of recording videos
	Download Path	Set save path of download video

	Configure Path	Set save path of local configuration
--	----------------	--------------------------------------

Step2: Click [Save] after finishing the settings.



: Click **【Reset】** to restore all file configuration to default..

8.3 Plan Configuration

8.3.1 View Plan

Steps of plan configuration as following:

Step1: Click [View Plan] on home page(See Area 2 of Figure3-2)

[Plan settings] interface as figure 8-3:

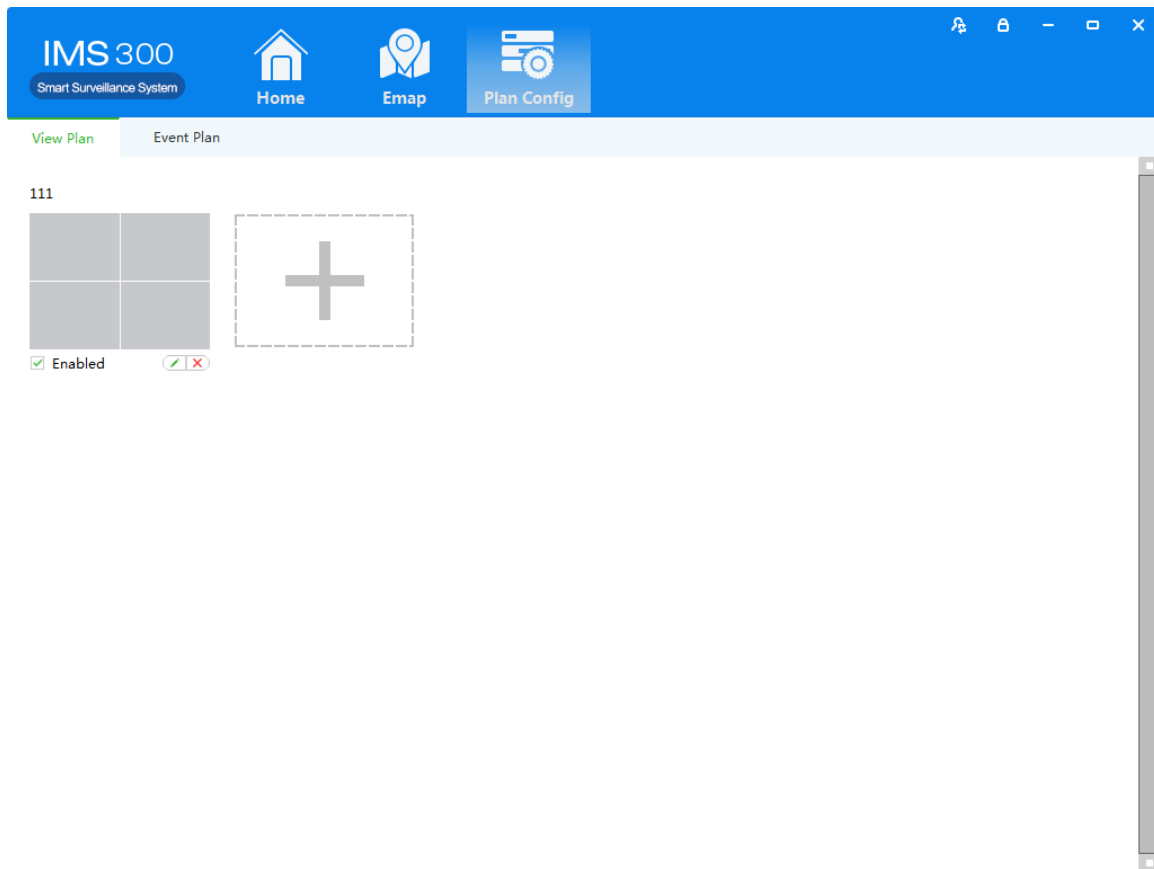


Figure 8-3 Plan settings

9 User Management

Detailed setting steps see below:

Click [E-map] on home page(Area 1 of Figure3-2)

Step1:Click [User management] on the tool list of home page

【User Management】 interface as figure 9-1:

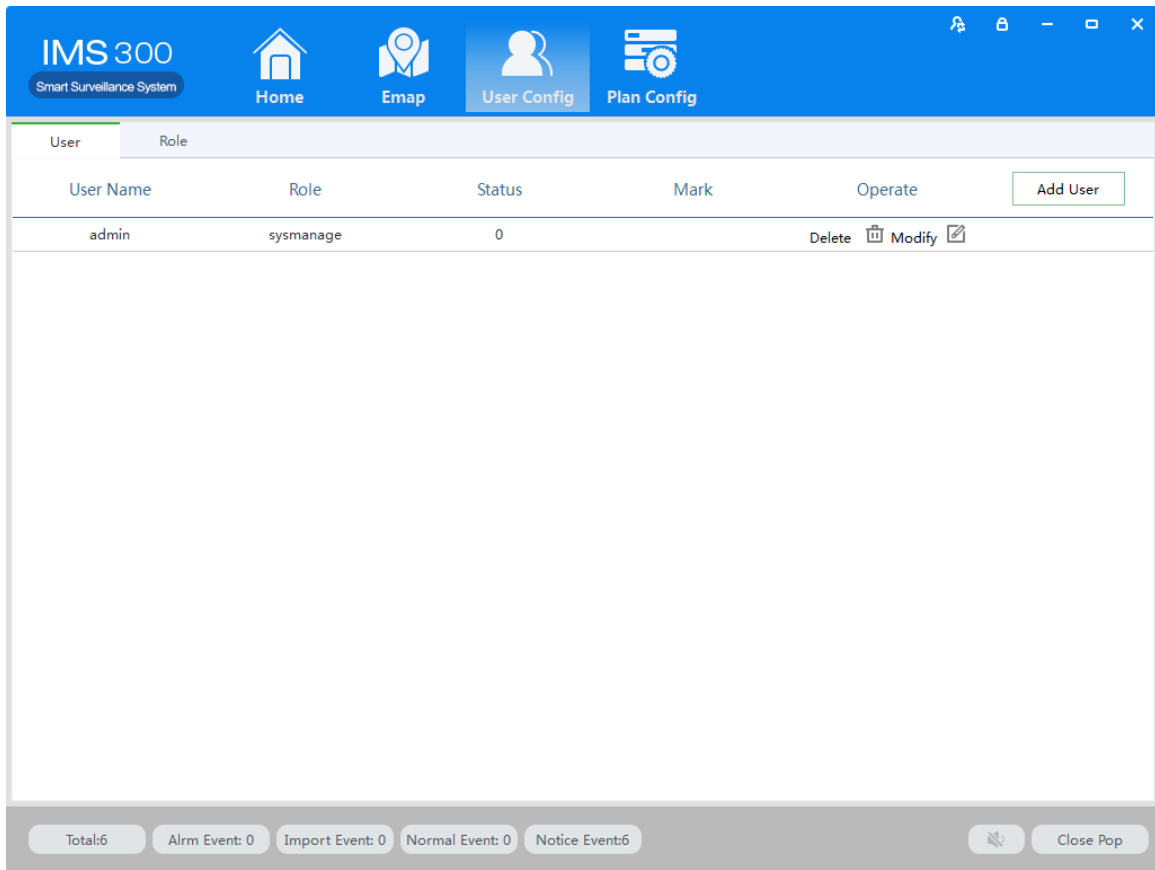


Figure 9-1 User Management